



中国认可
国际互认
检测
TESTING
CNAS L5510

第 1 页共 35 页

报告编号: CNRSJX2022-0036

检测报告

产品名称: 空气净化器

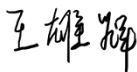
委托单位: 柒贰零（北京）健康科技有限公司

检测类别: 委托检测

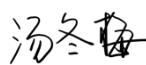
检测报告

产品名称	空气净化器	型号规格	主检型号: KJ400F-E420 覆盖型号: 详见第 3 页
委托单位	柒贰零(北京)健康科技有限公司	地址	北京市海淀区黑泉路 8 号 1 幢 9 层 101-42、101-43 号(东升地区)
样品数量	1 件	样品标识	0036-1
接样方式	自送	检测类别	委托检测
接样日期	2022-02-24	完成日期	2022-03-09
检测项目	样品中铅、镉、汞、六价铬、多溴联苯、多溴二苯醚含量		
检测依据	GB/T 26125-2011, GB/T 26572-2011 及《达标管理目录限用物质应用例外清单》		
检测结论	所检项目的结果符合 GB/T 26572-2011 及《达标管理目录限用物质应用例外清单》的要求。 <p style="text-align: right;">检测单位盖章 签发日期: 2022 年 03 月 09 日</p>		

批准: 王雄辉



审核: 汤冬梅



主检: 刘敏



样品描述及说明

样品照片:



制 造 商: 柒贰零(北京)健康科技有限公司

制造商地址: 北京市海淀区黑泉路 8 号 1 幢 9 层 101-42、101-43 号(东升地区)

生 产 厂: 深圳市康弘智能健康科技股份有限公司

生产厂地址: 深圳市龙岗区园山街道横坪公路 89 号涌鑫工业厂区 1 号厂房

依据委托单位提供同材质声明,以下覆盖型号中零部件的材质与主检型号 KJ400F-E420 中零部件的材质一致。

覆盖型号: KJ400F-E420-A

样品拆分清单					
序号	组件/部件/元器件		检测单元		备注
	编号	名称	编号	名称	
1	1	外壳	1-1	白色塑料进风口	—
2			1-2	白色塑料外壳	—
3			1-3	白色塑料后盖	—
4			1-4	白色塑料滤芯仓门	—
5			1-5	金属平头螺丝银色镀层 (短)	—
6			1-6	金属平头螺丝银色基材 (短)	—
7			1-7	白色塑料把手	—
8			1-8	银色磁铁	—
9			1-9	灰色塑料支架	—
10			1-10	白色塑料滤风盖	—
11			1-11	透明塑料滤网	—
12			1-12	灰色塑料底座	—
13			1-13	灰色塑料触控面板	—
15			1-15	灰色塑料上盖	—
16			1-16	黑色海绵垫	—
17			1-17	灰色塑料外壳	—
18			1-18	灰色塑料支架	—
19			1-19	灰色橡胶脚垫	—
20			1-20	灰色塑料外壳	—
21			1-21	灰色塑料上盖	—
22			1-22	白色塑料支架	—
23			1-23	金属螺丝银色镀层	—
24			1-24	金属螺丝银色基材	—
25			1-25	金属螺丝银色镀层	—
26			1-26	金属螺丝银色基材	—
27			1-27	银色金属垫片	—

样品拆分清单					
序号	组件/部件/元器件		检测单元		备注
	编号	名称	编号	名称	
28	2	触控面板	2-1	白色塑料支架	—
29			2-2	PCB 板基材	—
30			2-3	银色金属焊锡	—
31			2-4	贴片电阻	—
32			2-5	贴片电容	—
33			2-6	黑色芯片	—
34			2-7	电解电容银色铝壳	—
35			2-8	黑色塑料底座	—
36			2-9	黑色橡胶塞	—
37			2-10	黄色电解纸	—
38			2-11	灰色塑料膜	—
39			2-12	米色塑料接口	—
40			2-13	LED 灯	—
41	3	显示器	3-1	PCB 板基材	—
42			3-2	银色金属焊锡	—
43			3-3	贴片电阻	—
44			3-4	贴片电容	—
45			3-5	贴片三极管	—
46			3-6	黑色芯片	—
47			3-7	电解电容银色铝壳	—
48			3-8	黑色塑料底座	—
49			3-9	黑色橡胶塞	—
50			3-10	黄色电解纸	—
51			3-11	灰色塑料膜	—
52			3-12	米色塑料接口	—
53			3-13	显示支架白色塑料支架	—
54			3-14	黑色涂层	—

样品拆分清单					
序号	组件/部件/元器件		检测单元		备注
	编号	名称	编号	名称	
55	3	显示器	3-15	透明塑料片	—
56			3-16	黑色海绵	—
57			3-17	透明 LED	—
58			3-18	黄色 LED	—
59			3-19	蜂鸣器黑色塑料外壳	—
60			3-20	金色金属振片	—
61			3-21	白色陶瓷涂层	—
62			3-22	金属螺丝银色镀层	—
63			3-23	金属螺丝银色基材	—
64			4	主控板	4-1
65	4-2	黑色塑料盖			—
66	4-3	PCB 板基材			—
67	4-4	银色金属焊锡			—
68	4-5	贴片电阻			—
69	4-6	贴片电容			—
70	4-7	贴片二极管			—
71	4-8	贴片三极管			—
72	4-9	黑色芯片			—
73	4-10	米色塑料接口			—
74	4-11	白色塑料接口			—
75	4-12	白色塑料支架			—
76	4-13	银色金属插针			—
77	4-14	白色固定胶			—
78	4-15	电解电容银色铝壳			—
79	4-16	黑色塑料底座			—
80	4-17	黑色橡胶塞			—
81	4-18	黄色电解纸			—

样品拆分清单					
序号	组件/部件/元器件		检测单元		备注
	编号	名称	编号	名称	
82	4	主控板	4-19	灰色塑料膜	—
83			4-20	银色金属散热片	—
84			4-21	黑色可控硅	—
85			4-22	银色金属固定螺丝	—
86			4-23	蓝色陶瓷电容 1	—
87			4-24	蓝色陶瓷电容 2	—
88			4-25	蓝色陶瓷电容 3	—
89			4-26	蓝色陶瓷电容 4	—
90			4-27	蓝色陶瓷电容 5	—
91			4-28	黑色陶瓷电容	—
92			4-29	二极管	—
93			4-30	变压器银色金属卡簧	—
94			4-31	黑色金属支架	—
95			4-32	黄色胶带	—
96			4-33	黑色塑料绕线架	—
97			4-34	漆包线	—
98			4-35	安规电容黄色塑料外壳	—
99			4-36	黄色灌封胶	—
100			4-37	银色塑料膜	—
101			4-38	黑色可控硅	—
102			4-39	保险丝黑色塑料支架	—
103			4-40	银色金属保险丝	—
104			4-41	棕色塑料外壳	—
105			4-42	电感黑色橡胶外被	—
106			4-43	黑色金属绕线架	—
107			4-44	漆包线	—
108			4-45	变压器透明橡胶外被	—

样品拆分清单					
序号	组件/部件/元器件		检测单元		备注
	编号	名称	编号	名称	
109	4	主控板	4-46	黑色橡胶外被	—
110			4-47	黄色胶带	—
111			4-48	黑色金属支架	—
112			4-49	黑色塑料绕线架	—
113			4-50	漆包线	—
114			4-51	安规电容黑色塑料外壳	—
115			4-52	银色金属外壳	—
116			4-53	黑色橡胶垫	—
117			4-54	透明胶带	—
118			4-55	黄色电解纸	—
119			4-56	银色塑料膜	—
120			4-57	黑黄色塑料外壳	—
121			4-58	蓝色塑料外壳	—
122			5	电机	5-1
123	5-2	黑色塑料风轮			—
124	5-3	金属螺丝银色镀层			—
125	5-4	金属螺丝银色基材			—
126	5-5	金属螺母银色镀层			—
127	5-6	金属螺母银色基材			—
128	5-7	银色带垫螺丝银色镀层			—
129	5-8	金属带垫螺丝银色基材			—
130	5-9	金属垫片银色镀层			—
131	5-10	金属垫片银色基材			—
132	5-11	银色金属电机固定片			—
133	5-12	银色铭牌纸			—
134	5-13	银色金属外壳			—
135	5-14	黑色磁铁			—

样品拆分清单					
序号	组件/部件/元器件		检测单元		备注
	编号	名称	编号	名称	
136	5	电机	5-15	黑色金属卡簧	—
137			5-16	黑色金属垫片	—
138			5-17	银色金属轴	—
139			5-18	绿色涂层	—
140			5-19	银色金属硅钢片	—
141			5-20	漆包线	—
142			5-21	银色金属轴承外壳	—
143			5-22	银色金属挡尘板	—
144			5-23	银色金属保持架	—
145			5-24	银色金属滚珠	—
146			5-25	PCB 板基材	—
147			5-26	银色金属焊锡	—
148			5-27	贴片电阻	—
149			5-28	贴片电容	—
150			5-29	贴片三极管	—
151			5-30	黑色芯片	—
152			5-31	米色塑料接口	—
153			5-32	电解电容银色铝壳	—
154			5-33	黑色塑料底座	—
155			5-34	黑色橡胶塞	—
156	5-35	黄色电解纸	—		
157	5-36	灰色塑料膜	—		
158	6	内部连接线	6-1	白色塑料接插件	—
159			6-2	红色橡胶外被	—
160			6-3	白色橡胶外被	—
161			6-4	漆包线	—
162			6-5	红白色橡胶排线外被	—

样品拆分清单					
序号	组件/部件/元器件		检测单元		备注
	编号	名称	编号	名称	
163	6	内部连接线	6-6	米色塑料接插件	—
164			6-7	黑色橡胶热缩管	—
165			6-8	白色橡胶外被 (细)	—
166			6-9	黑色橡胶导线护套	—
167			6-10	黑色橡胶外被 (粗)	—
168			6-11	红色橡胶外被 (粗)	—
169			6-12	黑色热缩管 (粗)	—
170			6-13	黑色塑料磁铁外壳	—
171			6-14	白色塑料扎带	—
172			6-15	黑色磁圈	—
173			6-16	负离子发生器黑色塑料外壳	—
174			6-17	黑色灌封胶	—
175			7	充电底座	7-1
176	7-2	银色金属插针			—
177	7-3	红色橡胶外被			—
178	7-4	黑色橡胶外被			—
179	7-5	漆包线			—
180	7-6	黑色热缩管			—
181	7-7	黑色磁圈			—
182	7-8	黑色橡胶护线套			—
183	8	滤芯	8-1	白色塑料滤芯上盖	—
184			8-2	白色纤维带	—
185			8-3	黑色海绵	—
186			8-4	白色塑料滤芯底座	—
187			8-5	白色纤维布	—
188			8-6	紫色纤维布	—

样品拆分清单					
序号	组件/部件/元器件		检测单元		备注
	编号	名称	编号	名称	
189	8	滤芯	8-7	白色固定线	—
190			8-8	黑色碳滤网	—
191			8-9	透明塑料滤网	—
192			8-10	紫色塑料滤网	—
193			8-11	PCB 板基材	—
194			8-12	银色金属焊锡	—
195			8-13	贴片电阻	—
196			8-14	贴片电容	—
197			8-15	贴片二极管	—
198			8-16	黑色芯片	—
199			8-17	金属 LED 灯	—
200			8-18	电感黑色金属绕线架	—
201			8-19	漆包线	—
202	9	闭合开关/WiFi 模块	9-1	闭合开关 PCB 板基材	—
203			9-2	银色金属焊锡	—
204			9-3	白色塑料插座	—
205			9-4	透明闭合开关	—
206			9-5	金属螺丝银色镀层	—
207			9-6	金属螺丝银色基材	—
208			9-7	WiFi 模块 PCB 板基材	—
209			9-8	银色金属焊锡	—
210			9-9	贴片电阻	—
211			9-10	贴片电容	—
212			9-11	贴片二极管	—
213			9-12	贴片三极管	—
214			9-13	黑色整流桥	—
215			9-14	白色铭牌	—

样品拆分清单					
序号	组件/部件/元器件		检测单元		备注
	编号	名称	编号	名称	
216	9	闭合开关/WiFi 模块	9-15	银色金属屏蔽罩	—
217	10	电源线	10-1	灰色橡胶插头	—
218			10-2	白色塑料支架	—
219			10-3	银色金属插片	—
220			10-4	灰色橡胶导线护套	—
221			10-5	蓝色橡胶外被	—
222			10-6	棕色橡胶外被	—
223			10-7	漆包线	—
224			10-8	灰色橡胶插口外套	—
225			10-9	白色塑料支架	—
226			10-10	金色金属插针	—
227			11	PM2.5 激光传感器	11-1
228	11-2	银色金属外壳			—
229	11-3	黑色塑料外壳			—
230	11-4	黑色塑料支架			—
231	11-5	PCB 板基材			—
232	11-6	银色金属焊锡			—
233	11-7	贴片电阻			—
234	11-8	透明胶			—
235	11-9	黑色金属镜头主体			—
236	11-10	透明玻璃镜头			—
237	11-11	银色金属弹簧			—
238	11-12	PCB 板基材			—
239	11-13	银色金属焊锡			—
240	11-14	贴片电阻			—
241	11-15	贴片电容			—
242	11-16	贴片二极管			—

样品拆分清单					
序号	组件/部件/元器件		检测单元		备注
	编号	名称	编号	名称	
243	11	PM2.5 激光传感器	11-17	贴片三极管	—
244			11-18	黑色光泵	—
245			11-19	黑色芯片	—
246			11-20	米色塑料接口	—
247			11-21	黑色金属螺丝	—
248			11-22	银色商标	—
249			11-23	黑色塑料叶轮外壳	—
250			11-24	PCB 板基材	—
251			11-25	银色金属焊锡	—
252			11-26	黑色塑料叶轮	—
253			11-27	银色金属轴	—
254			11-28	银色金属外壳	—
255			11-29	黑色磁铁	—
256			11-30	金属螺丝黑色镀层	—
257			11-31	金属螺丝银色基材	—
258	12	程控板	12-1	PCB 板基材	—
259			12-2	银色金属焊锡	—
260			12-3	贴片电阻	—
261			12-4	黑色二极管	—
262			12-5	黑色三极管	—
263			12-6	黑色芯片	—
264			12-7	银色金属芯片	—
265			12-8	黄色元器件	—
266			12-9	灰色橡胶外被	—
267			12-10	红色橡胶外被	—
268			12-11	黑色橡胶外被	—
269			12-12	漆包线	—

样品拆分清单					
序号	组件/部件/元器件		检测单元		备注
	编号	名称	编号	名称	
270	12	程控板	12-13	米色塑料插座	—
271			12-14	白色塑料卡子	—
272			12-15	银色金属电池	—
273			12-16	PCB 板基材	—
274			12-17	银色金属焊锡	—
275			12-18	贴片电阻	—
276			12-19	黑色芯片	—
277			12-20	黄色塑料纸	—
278			12-21	铜色金属端子	—

检测结果及判定

序号	检测单元名称	筛选检测结果(mg/kg)						确证检测结果(mg/kg)						判定	
		铅 (Pb)	镉 (Cd)	汞 (Hg)	总铬 (Cr)	总溴 (Br)	筛选判定	铅 (Pb)	镉 (Cd)	汞 (Hg)	六价铬 (Cr ⁶⁺)		多溴联苯 (PBBs)		多溴二苯醚 (PBDEs)
											金属镀层	其他材料			
1	白色塑料进风口	N.D.	N.D.	N.D.	N.D.	N.D.	P	/	/	/	/	/	/	/	P
2	白色塑料外壳	N.D.	N.D.	N.D.	N.D.	N.D.	P	/	/	/	/	/	/	/	P
3	白色塑料后盖	N.D.	N.D.	N.D.	N.D.	N.D.	P	/	/	/	/	/	/	/	P
4	白色塑料滤芯仓门	N.D.	N.D.	N.D.	N.D.	N.D.	P	/	/	/	/	/	/	/	P
5	金属平头螺丝银色镀层 (短)	N.D.	N.D.	N.D.	/	—	V	/	/	/	阴性	/	/	/	P
6	金属平头螺丝银色基材 (短)	N.D.	N.D.	N.D.	N.D.	—	P	/	/	/	/	/	/	/	P
7	白色塑料把手	N.D.	N.D.	N.D.	N.D.	N.D.	P	/	/	/	/	/	/	/	P
8	银色磁铁	/	/	/	/	—	V	N.D.	N.D.	N.D.	/	N.D.	/	/	P
9	灰色塑料支架	N.D.	N.D.	N.D.	N.D.	N.D.	P	/	/	/	/	/	/	/	P
10	白色塑料滤风盖	N.D.	N.D.	N.D.	N.D.	N.D.	P	/	/	/	/	/	/	/	P
11	透明塑料滤网	N.D.	N.D.	N.D.	N.D.	N.D.	P	/	/	/	/	/	/	/	P
12	灰色塑料底座	N.D.	N.D.	N.D.	N.D.	N.D.	P	/	/	/	/	/	/	/	P
13	灰色塑料触控面板	N.D.	N.D.	N.D.	N.D.	N.D.	P	/	/	/	/	/	/	/	P
15	灰色塑料上盖	N.D.	N.D.	N.D.	N.D.	N.D.	P	/	/	/	/	/	/	/	P
16	黑色海绵垫	N.D.	N.D.	N.D.	N.D.	N.D.	P	/	/	/	/	/	/	/	P
17	灰色塑料外壳	N.D.	N.D.	N.D.	N.D.	N.D.	P	/	/	/	/	/	/	/	P
18	灰色塑料支架	N.D.	N.D.	N.D.	N.D.	N.D.	P	/	/	/	/	/	/	/	P
19	灰色橡胶脚垫	N.D.	N.D.	N.D.	N.D.	N.D.	P	/	/	/	/	/	/	/	P

检测结果及判定

序号	检测单元名称	筛选检测结果(mg/kg)						确证检测结果(mg/kg)							判定
		铅 (Pb)	镉 (Cd)	汞 (Hg)	总铬 (Cr)	总溴 (Br)	筛选判定	铅 (Pb)	镉 (Cd)	汞 (Hg)	六价铬 (Cr ⁶⁺)		多溴联苯 (PBBs)	多溴二苯醚 (PBDEs)	
											金属镀层	其他材料			
20	灰色塑料外壳	N.D.	N.D.	N.D.	N.D.	N.D.	P	/	/	/	/	/	/	/	P
21	灰色塑料上盖	N.D.	N.D.	N.D.	N.D.	N.D.	P	/	/	/	/	/	/	/	P
22	白色塑料支架	N.D.	N.D.	N.D.	N.D.	N.D.	P	/	/	/	/	/	/	/	P
23	金属螺丝银色镀层	N.D.	N.D.	N.D.	/	—	V	/	/	/	阴性	/	/	/	P
24	金属螺丝银色基材	N.D.	N.D.	N.D.	N.D.	—	P	/	/	/	/	/	/	/	P
25	金属螺丝银色镀层	N.D.	N.D.	N.D.	/	—	V	/	/	/	阴性	/	/	/	P
26	金属螺丝银色基材	N.D.	N.D.	N.D.	N.D.	—	P	/	/	/	/	/	/	/	P
27	银色金属垫片	N.D.	N.D.	N.D.	N.D.	—	P	/	/	/	/	/	/	/	P
28	白色塑料支架	N.D.	N.D.	N.D.	N.D.	N.D.	P	/	/	/	/	/	/	/	P
29	PCB 板基材	N.D.	N.D.	N.D.	N.D.	2.2 × 10 ⁴	V	/	/	/	/	/	N.D.	N.D.	P
30	银色金属焊锡	N.D.	N.D.	N.D.	N.D.	—	P	/	/	/	/	/	/	/	P
31	贴片电阻	N.D.	N.D.	N.D.	N.D.	N.D.	P	/	/	/	/	/	/	/	P
32	贴片电容	N.D.	N.D.	N.D.	N.D.	N.D.	P	/	/	/	/	/	/	/	P
33	黑色芯片	N.D.	N.D.	N.D.	N.D.	N.D.	P	/	/	/	/	/	/	/	P
34	电解电容银色铝壳	N.D.	N.D.	N.D.	N.D.	—	P	/	/	/	/	/	/	/	P
35	黑色塑料底座	N.D.	N.D.	N.D.	N.D.	N.D.	P	/	/	/	/	/	/	/	P
36	黑色橡胶塞	N.D.	N.D.	N.D.	N.D.	N.D.	P	/	/	/	/	/	/	/	P
37	黄色电解纸	N.D.	N.D.	N.D.	N.D.	N.D.	P	/	/	/	/	/	/	/	P

检测结果及判定

序号	检测单元名称	筛选检测结果(mg/kg)						确证检测结果(mg/kg)							判定
		铅 (Pb)	镉 (Cd)	汞 (Hg)	总铬 (Cr)	总溴 (Br)	筛选判定	铅 (Pb)	镉 (Cd)	汞 (Hg)	六价铬 (Cr ⁶⁺)		多溴联苯 (PBBs)	多溴二苯醚 (PBDEs)	
											金属镀层	其他材料			
38	灰色塑料膜	N.D.	N.D.	N.D.	N.D.	N.D.	P	/	/	/	/	/	/	/	P
39	米色塑料接口	N.D.	N.D.	N.D.	N.D.	N.D.	P	/	/	/	/	/	/	/	P
40	LED 灯	N.D.	N.D.	N.D.	N.D.	N.D.	P	/	/	/	/	/	/	/	P
41	PCB 板基材	N.D.	N.D.	N.D.	N.D.	2.1 × 10 ⁴	V	/	/	/	/	/	N.D.	N.D.	P
42	银色金属焊锡	N.D.	N.D.	N.D.	N.D.	—	P	/	/	/	/	/	/	/	P
43	贴片电阻	N.D.	N.D.	N.D.	N.D.	N.D.	P	/	/	/	/	/	/	/	P
44	贴片电容	N.D.	N.D.	N.D.	N.D.	N.D.	P	/	/	/	/	/	/	/	P
45	贴片三极管	N.D.	N.D.	N.D.	N.D.	N.D.	P	/	/	/	/	/	/	/	P
46	黑色芯片	N.D.	N.D.	N.D.	N.D.	N.D.	P	/	/	/	/	/	/	/	P
47	电解电容银色铝壳	N.D.	N.D.	N.D.	N.D.	—	P	/	/	/	/	/	/	/	P
48	黑色塑料底座	N.D.	N.D.	N.D.	N.D.	N.D.	P	/	/	/	/	/	/	/	P
49	黑色橡胶塞	N.D.	N.D.	N.D.	N.D.	N.D.	P	/	/	/	/	/	/	/	P
50	黄色电解纸	N.D.	N.D.	N.D.	N.D.	N.D.	P	/	/	/	/	/	/	/	P
51	灰色塑料膜	N.D.	N.D.	N.D.	N.D.	N.D.	P	/	/	/	/	/	/	/	P
52	米色塑料接口	N.D.	N.D.	N.D.	N.D.	N.D.	P	/	/	/	/	/	/	/	P
53	显示支架白色塑料支架	N.D.	N.D.	N.D.	N.D.	N.D.	P	/	/	/	/	/	/	/	P
54	黑色涂层	N.D.	N.D.	N.D.	N.D.	N.D.	P	/	/	/	/	/	/	/	P
55	透明塑料片	N.D.	N.D.	N.D.	N.D.	N.D.	P	/	/	/	/	/	/	/	P

检测结果及判定

序号	检测单元名称	筛选检测结果(mg/kg)						确证检测结果(mg/kg)							判定
		铅 (Pb)	镉 (Cd)	汞 (Hg)	总铬 (Cr)	总溴 (Br)	筛选判定	铅 (Pb)	镉 (Cd)	汞 (Hg)	六价铬 (Cr ⁶⁺)		多溴联苯 (PBBs)	多溴二苯醚 (PBDEs)	
											金属镀层	其他材料			
56	黑色海绵	N.D.	N.D.	N.D.	N.D.	N.D.	P	/	/	/	/	/	/	/	P
57	透明 LED	N.D.	N.D.	N.D.	N.D.	N.D.	P	/	/	/	/	/	/	/	P
58	黄色 LED	N.D.	N.D.	N.D.	N.D.	N.D.	P	/	/	/	/	/	/	/	P
59	蜂鸣器黑色塑料外壳	N.D.	N.D.	N.D.	N.D.	N.D.	P	/	/	/	/	/	/	/	P
60	金色金属振片	N.D.	N.D.	N.D.	N.D.	—	P	/	/	/	/	/	/	/	P
61	白色陶瓷涂层	8.6 × 10 ⁵	N.D.	N.D.	N.D.	—	P ▲1	5.6 × 10 ⁵	/	/	/	/	/	/	P ▲1
62	金属螺丝银色镀层	N.D.	N.D.	N.D.	/	—	V	/	/	/	阴性	/	/	/	P
63	金属螺丝银色基材	N.D.	N.D.	N.D.	N.D.	—	P	/	/	/	/	/	/	/	P
64	黑色塑料外壳	N.D.	N.D.	N.D.	N.D.	3.5 × 10 ⁴	V	/	/	/	/	/	N.D.	N.D.	P
65	黑色塑料盖	N.D.	N.D.	N.D.	N.D.	3.6 × 10 ⁴	V	/	/	/	/	/	N.D.	N.D.	P
66	PCB 板基材	N.D.	N.D.	N.D.	N.D.	2.4 × 10 ⁴	V	/	/	/	/	/	N.D.	N.D.	P
67	银色金属焊锡	N.D.	N.D.	N.D.	N.D.	—	P	/	/	/	/	/	/	/	P
68	贴片电阻	N.D.	N.D.	N.D.	N.D.	N.D.	P	/	/	/	/	/	/	/	P
69	贴片电容	N.D.	N.D.	N.D.	N.D.	N.D.	P	/	/	/	/	/	/	/	P
70	贴片二极管	N.D.	N.D.	N.D.	N.D.	N.D.	P	/	/	/	/	/	/	/	P
71	贴片三极管	N.D.	N.D.	N.D.	N.D.	N.D.	P	/	/	/	/	/	/	/	P
72	黑色芯片	N.D.	N.D.	N.D.	N.D.	N.D.	P	/	/	/	/	/	/	/	P
73	米色塑料接口	N.D.	N.D.	N.D.	N.D.	4.1 × 10 ⁴	V	/	/	/	/	/	N.D.	N.D.	P

检测结果及判定

序号	检测单元名称	筛选检测结果(mg/kg)						确证检测结果(mg/kg)						判定	
		铅 (Pb)	镉 (Cd)	汞 (Hg)	总铬 (Cr)	总溴 (Br)	筛选判定	铅 (Pb)	镉 (Cd)	汞 (Hg)	六价铬 (Cr ⁶⁺)		多溴联苯 (PBBs)		多溴二苯醚 (PBDEs)
											金属镀层	其他材料			
74	白色塑料接口	N.D.	N.D.	N.D.	N.D.	N.D.	P	/	/	/	/	/	/	/	P
75	白色塑料支架	N.D.	N.D.	N.D.	N.D.	N.D.	P	/	/	/	/	/	/	/	P
76	银色金属插针	N.D.	N.D.	N.D.	N.D.	—	P	/	/	/	/	/	/	/	P
77	白色固定胶	N.D.	N.D.	N.D.	N.D.	N.D.	P	/	/	/	/	/	/	/	P
78	电解电容银色铝壳	N.D.	N.D.	N.D.	N.D.	—	P	/	/	/	/	/	/	/	P
79	黑色塑料底座	N.D.	N.D.	N.D.	N.D.	N.D.	P	/	/	/	/	/	/	/	P
80	黑色橡胶塞	N.D.	N.D.	N.D.	N.D.	N.D.	P	/	/	/	/	/	/	/	P
81	黄色电解纸	N.D.	N.D.	N.D.	N.D.	N.D.	P	/	/	/	/	/	/	/	P
82	灰色塑料膜	N.D.	N.D.	N.D.	N.D.	N.D.	P	/	/	/	/	/	/	/	P
83	银色金属散热片	N.D.	N.D.	N.D.	N.D.	—	P	/	/	/	/	/	/	/	P
84	黑色可控硅	N.D.	N.D.	N.D.	N.D.	—	P	/	/	/	/	/	/	/	P
85	银色金属固定螺丝	N.D.	N.D.	N.D.	N.D.	—	P	/	/	/	/	/	/	/	P
86	蓝色陶瓷电容 1	N.D.	N.D.	N.D.	N.D.	—	P	/	/	/	/	/	/	/	P
87	蓝色陶瓷电容 2	N.D.	N.D.	N.D.	N.D.	—	P	/	/	/	/	/	/	/	P
88	蓝色陶瓷电容 3	N.D.	N.D.	N.D.	N.D.	—	P	/	/	/	/	/	/	/	P
89	蓝色陶瓷电容 4	N.D.	N.D.	N.D.	N.D.	—	P	/	/	/	/	/	/	/	P
90	蓝色陶瓷电容 5	N.D.	N.D.	N.D.	N.D.	—	P	/	/	/	/	/	/	/	P
91	黑色陶瓷电容	N.D.	N.D.	N.D.	N.D.	—	P	/	/	/	/	/	/	/	P

检测结果及判定

序号	检测单元名称	筛选检测结果(mg/kg)						确证检测结果(mg/kg)							判定
		铅(Pb)	镉(Cd)	汞(Hg)	总铬(Cr)	总溴(Br)	筛选判定	铅(Pb)	镉(Cd)	汞(Hg)	六价铬(Cr ⁶⁺)		多溴联苯(PBBs)	多溴二苯醚(PBDEs)	
											金属镀层	其他材料			
92	二极管	N.D.	N.D.	N.D.	N.D.	N.D.	P	/	/	/	/	/	/	/	P
93	变压器银色金属卡簧	N.D.	N.D.	N.D.	8.1 × 10 ⁴	—	V	/	/	/	/	N.D.	/	/	P
94	黑色金属支架	N.D.	N.D.	N.D.	N.D.	—	P	/	/	/	/	/	/	/	P
95	黄色胶带	N.D.	N.D.	N.D.	N.D.	N.D.	P	/	/	/	/	/	/	/	P
96	黑色塑料绕线架	N.D.	N.D.	N.D.	N.D.	N.D.	P	/	/	/	/	/	/	/	P
97	漆包线	N.D.	N.D.	N.D.	N.D.	—	P	/	/	/	/	/	/	/	P
98	安规电容黄色塑料外壳	N.D.	N.D.	N.D.	N.D.	2.0 × 10 ⁴	V	/	/	/	/	/	N.D.	N.D.	P
99	黄色灌封胶	N.D.	N.D.	N.D.	N.D.	N.D.	P	/	/	/	/	/	/	/	P
100	银色塑料膜	N.D.	N.D.	N.D.	N.D.	N.D.	P	/	/	/	/	/	/	/	P
101	黑色可控硅	N.D.	N.D.	N.D.	N.D.	—	P	/	/	/	/	/	/	/	P
102	保险丝黑色塑料支架	N.D.	N.D.	N.D.	N.D.	N.D.	P	/	/	/	/	/	/	/	P
103	银色金属保险丝	N.D.	N.D.	N.D.	N.D.	—	P	/	/	/	/	/	/	/	P
104	棕色塑料外壳	N.D.	N.D.	N.D.	N.D.	N.D.	P	/	/	/	/	/	/	/	P
105	电感黑色橡胶外被	N.D.	N.D.	N.D.	N.D.	N.D.	P	/	/	/	/	/	/	/	P
106	黑色金属绕线架	N.D.	N.D.	N.D.	N.D.	—	P	/	/	/	/	/	/	/	P
107	漆包线	N.D.	N.D.	N.D.	N.D.	—	P	/	/	/	/	/	/	/	P
108	变压器透明橡胶外被	N.D.	N.D.	N.D.	N.D.	N.D.	P	/	/	/	/	/	/	/	P
109	黑色橡胶外被	N.D.	N.D.	N.D.	N.D.	N.D.	P	/	/	/	/	/	/	/	P

检测结果及判定

序号	检测单元名称	筛选检测结果(mg/kg)						确证检测结果(mg/kg)						判定	
		铅(Pb)	镉(Cd)	汞(Hg)	总铬(Cr)	总溴(Br)	筛选判定	铅(Pb)	镉(Cd)	汞(Hg)	六价铬(Cr ⁶⁺)		多溴联苯(PBBs)		多溴二苯醚(PBDEs)
											金属镀层	其他材料			
110	黄色胶带	N.D.	N.D.	N.D.	N.D.	N.D.	P	/	/	/	/	/	/	/	P
111	黑色金属支架	N.D.	N.D.	N.D.	N.D.	—	P	/	/	/	/	/	/	/	P
112	黑色塑料绕线架	N.D.	N.D.	N.D.	N.D.	N.D.	P	/	/	/	/	/	/	/	P
113	漆包线	N.D.	N.D.	N.D.	N.D.	—	P	/	/	/	/	/	/	/	P
114	安规电容黑色塑料外壳	N.D.	N.D.	N.D.	N.D.	N.D.	P	/	/	/	/	/	/	/	P
115	银色金属外壳	N.D.	N.D.	N.D.	N.D.	—	P	/	/	/	/	/	/	/	P
116	黑色橡胶垫	N.D.	N.D.	N.D.	N.D.	N.D.	P	/	/	/	/	/	/	/	P
117	透明胶带	N.D.	N.D.	N.D.	N.D.	N.D.	P	/	/	/	/	/	/	/	P
118	黄色电解纸	N.D.	N.D.	N.D.	N.D.	N.D.	P	/	/	/	/	/	/	/	P
119	银色塑料膜	N.D.	N.D.	N.D.	N.D.	N.D.	P	/	/	/	/	/	/	/	P
120	黑黄色塑料外壳	N.D.	N.D.	N.D.	N.D.	N.D.	P	/	/	/	/	/	/	/	P
121	蓝色塑料外壳	N.D.	N.D.	N.D.	N.D.	N.D.	P	/	/	/	/	/	/	/	P
122	灰色塑料支架	N.D.	N.D.	N.D.	N.D.	N.D.	P	/	/	/	/	/	/	/	P
123	黑色塑料风轮	N.D.	N.D.	N.D.	N.D.	1464	V	/	/	/	/	/	N.D.	N.D.	P
124	金属螺丝银色镀层	N.D.	N.D.	N.D.	/	—	V	/	/	/	阴性	/	/	/	P
125	金属螺丝银色基材	N.D.	N.D.	N.D.	N.D.	—	P	/	/	/	/	/	/	/	P
126	金属螺母银色镀层	N.D.	N.D.	N.D.	/	—	V	/	/	/	阴性	/	/	/	P
127	金属螺母银色基材	N.D.	N.D.	N.D.	N.D.	—	P	/	/	/	/	/	/	/	P

检测结果及判定

序号	检测单元名称	筛选检测结果(mg/kg)						确证检测结果(mg/kg)						判定	
		铅 (Pb)	镉 (Cd)	汞 (Hg)	总铬 (Cr)	总溴 (Br)	筛选判定	铅 (Pb)	镉 (Cd)	汞 (Hg)	六价铬 (Cr ⁶⁺)		多溴联苯 (PBBs)		多溴二苯醚 (PBDEs)
											金属镀层	其他材料			
128	银色带垫螺丝银色镀层	N.D.	N.D.	N.D.	/	—	V	/	/	/	阴性	/	/	/	P
129	金属带垫螺丝银色基材	N.D.	N.D.	N.D.	N.D.	—	P	/	/	/	/	/	/	/	P
130	金属垫片银色镀层	N.D.	N.D.	N.D.	/	—	V	/	/	/	阴性	/	/	/	P
131	金属垫片银色基材	N.D.	N.D.	N.D.	N.D.	—	P	/	/	/	/	/	/	/	P
132	银色金属电机固定片	N.D.	N.D.	N.D.	1025	—	V	/	/	/	/	N.D.	/	/	P
133	银色铭牌纸	N.D.	N.D.	N.D.	N.D.	N.D.	P	/	/	/	/	/	/	/	P
134	银色金属外壳	N.D.	N.D.	N.D.	N.D.	—	P	/	/	/	/	/	/	/	P
135	黑色磁铁	/	/	/	/	—	V	N.D.	N.D.	N.D.	/	N.D.	/	/	P
136	黑色金属卡簧	N.D.	N.D.	N.D.	1875	—	V	/	/	/	/	N.D.	/	/	P
137	黑色金属垫片	N.D.	N.D.	N.D.	1748	—	V	/	/	/	/	N.D.	/	/	P
138	银色金属轴	N.D.	N.D.	N.D.	N.D.	—	P	/	/	/	/	/	/	/	P
139	绿色涂层	N.D.	N.D.	N.D.	N.D.	N.D.	P	/	/	/	/	/	/	/	P
140	银色金属硅钢片	N.D.	N.D.	N.D.	N.D.	—	P	/	/	/	/	/	/	/	P
141	漆包线	N.D.	N.D.	N.D.	N.D.	—	P	/	/	/	/	/	/	/	P
142	银色金属轴承外壳	N.D.	N.D.	N.D.	N.D.	—	P	/	/	/	/	/	/	/	P
143	银色金属挡尘板	N.D.	N.D.	N.D.	N.D.	—	P	/	/	/	/	/	/	/	P
144	银色金属保持架	N.D.	N.D.	N.D.	N.D.	—	P	/	/	/	/	/	/	/	P
145	银色金属滚珠	N.D.	N.D.	N.D.	N.D.	—	P	/	/	/	/	/	/	/	P

检测结果及判定

序号	检测单元名称	筛选检测结果(mg/kg)						确证检测结果(mg/kg)							判定
		铅 (Pb)	镉 (Cd)	汞 (Hg)	总铬 (Cr)	总溴 (Br)	筛选判定	铅 (Pb)	镉 (Cd)	汞 (Hg)	六价铬 (Cr ⁶⁺)		多溴联苯 (PBBs)	多溴二苯醚 (PBDEs)	
											金属镀层	其他材料			
146	PCB 板基材	N.D.	N.D.	N.D.	N.D.	2.5 × 10 ⁴	V	/	/	/	/	/	N.D.	N.D.	P
147	银色金属焊锡	N.D.	N.D.	N.D.	N.D.	—	P	/	/	/	/	/	/	/	P
148	贴片电阻	N.D.	N.D.	N.D.	N.D.	N.D.	P	/	/	/	/	/	/	/	P
149	贴片电容	N.D.	N.D.	N.D.	N.D.	N.D.	P	/	/	/	/	/	/	/	P
150	贴片三极管	N.D.	N.D.	N.D.	N.D.	N.D.	P	/	/	/	/	/	/	/	P
151	黑色芯片	N.D.	N.D.	N.D.	N.D.	N.D.	P	/	/	/	/	/	/	/	P
152	米色塑料接口	N.D.	N.D.	N.D.	N.D.	N.D.	P	/	/	/	/	/	/	/	P
153	电解电容银色铝壳	N.D.	N.D.	N.D.	N.D.	—	P	/	/	/	/	/	/	/	P
154	黑色塑料底座	N.D.	N.D.	N.D.	N.D.	N.D.	P	/	/	/	/	/	/	/	P
155	黑色橡胶塞	N.D.	N.D.	N.D.	N.D.	N.D.	P	/	/	/	/	/	/	/	P
156	黄色电解纸	N.D.	N.D.	N.D.	N.D.	N.D.	P	/	/	/	/	/	/	/	P
157	灰色塑料膜	N.D.	N.D.	N.D.	N.D.	N.D.	P	/	/	/	/	/	/	/	P
158	白色塑料接插件	N.D.	N.D.	N.D.	N.D.	N.D.	P	/	/	/	/	/	/	/	P
159	红色橡胶外被	N.D.	N.D.	N.D.	N.D.	N.D.	P	/	/	/	/	/	/	/	P
160	白色橡胶外被	N.D.	N.D.	N.D.	N.D.	N.D.	P	/	/	/	/	/	/	/	P
161	漆包线	N.D.	N.D.	N.D.	N.D.	—	P	/	/	/	/	/	/	/	P
162	红白色橡胶排线外被	N.D.	N.D.	N.D.	N.D.	N.D.	P	/	/	/	/	/	/	/	P
163	米色塑料接插件	N.D.	N.D.	N.D.	N.D.	4.7 × 10 ⁴	V	/	/	/	/	/	N.D.	N.D.	P

检测结果及判定

序号	检测单元名称	筛选检测结果(mg/kg)						确证检测结果(mg/kg)							判定
		铅(Pb)	镉(Cd)	汞(Hg)	总铬(Cr)	总溴(Br)	筛选判定	铅(Pb)	镉(Cd)	汞(Hg)	六价铬(Cr ⁶⁺)		多溴联苯(PBBs)	多溴二苯醚(PBDEs)	
											金属镀层	其他材料			
164	黑色橡胶热缩管	N.D.	N.D.	N.D.	N.D.	N.D.	P	/	/	/	/	/	/	/	P
165	白色橡胶外被(细)	N.D.	N.D.	N.D.	N.D.	N.D.	P	/	/	/	/	/	/	/	P
166	黑色橡胶导线护套	N.D.	N.D.	N.D.	N.D.	N.D.	P	/	/	/	/	/	/	/	P
167	黑色橡胶外被(粗)	N.D.	N.D.	N.D.	N.D.	N.D.	P	/	/	/	/	/	/	/	P
168	红色橡胶外被(粗)	N.D.	N.D.	N.D.	N.D.	N.D.	P	/	/	/	/	/	/	/	P
169	黑色热缩管(粗)	N.D.	N.D.	N.D.	N.D.	N.D.	P	/	/	/	/	/	/	/	P
170	黑色塑料磁铁外壳	N.D.	N.D.	N.D.	N.D.	N.D.	P	/	/	/	/	/	/	/	P
171	白色塑料扎带	N.D.	N.D.	N.D.	N.D.	N.D.	P	/	/	/	/	/	/	/	P
172	黑色磁圈	N.D.	N.D.	N.D.	N.D.	—	P	/	/	/	/	/	/	/	P
173	负离子发生器黑色塑料外壳	N.D.	N.D.	N.D.	N.D.	1.8 × 10 ⁴	V	/	/	/	/	/	N.D.	N.D.	P
174	黑色灌封胶	N.D.	N.D.	N.D.	N.D.	N.D.	P	/	/	/	/	/	/	/	P
175	黑色塑料充电口	N.D.	N.D.	N.D.	N.D.	4027	V	/	/	/	/	/	N.D.	N.D.	P
176	银色金属插针	N.D.	N.D.	N.D.	N.D.	—	P	/	/	/	/	/	/	/	P
177	红色橡胶外被	N.D.	N.D.	N.D.	N.D.	N.D.	P	/	/	/	/	/	/	/	P
178	黑色橡胶外被	N.D.	N.D.	N.D.	N.D.	N.D.	P	/	/	/	/	/	/	/	P
179	漆包线	N.D.	N.D.	N.D.	N.D.	—	P	/	/	/	/	/	/	/	P
180	黑色热缩管	N.D.	N.D.	N.D.	N.D.	N.D.	P	/	/	/	/	/	/	/	P
181	黑色磁圈	N.D.	N.D.	N.D.	N.D.	—	P	/	/	/	/	/	/	/	P

检测结果及判定

序号	检测单元名称	筛选检测结果(mg/kg)						确证检测结果(mg/kg)							判定
		铅 (Pb)	镉 (Cd)	汞 (Hg)	总铬 (Cr)	总溴 (Br)	筛选判定	铅 (Pb)	镉 (Cd)	汞 (Hg)	六价铬 (Cr ⁶⁺)		多溴联苯 (PBBs)	多溴二苯醚 (PBDEs)	
											金属镀层	其他材料			
182	黑色橡胶护线套	N.D.	N.D.	N.D.	N.D.	N.D.	P	/	/	/	/	/	/	/	P
183	白色塑料滤芯上盖	N.D.	N.D.	N.D.	N.D.	N.D.	P	/	/	/	/	/	/	/	P
184	白色纤维带	N.D.	N.D.	N.D.	N.D.	N.D.	P	/	/	/	/	/	/	/	P
185	黑色海绵	N.D.	N.D.	N.D.	N.D.	N.D.	P	/	/	/	/	/	/	/	P
186	白色塑料滤芯底座	N.D.	N.D.	N.D.	N.D.	N.D.	P	/	/	/	/	/	/	/	P
187	白色纤维布	N.D.	N.D.	N.D.	N.D.	N.D.	P	/	/	/	/	/	/	/	P
188	紫色纤维布	N.D.	N.D.	N.D.	N.D.	N.D.	P	/	/	/	/	/	/	/	P
189	白色固定线	N.D.	N.D.	N.D.	N.D.	N.D.	P	/	/	/	/	/	/	/	P
190	黑色碳滤网	N.D.	N.D.	N.D.	N.D.	N.D.	P	/	/	/	/	/	/	/	P
191	透明塑料滤网	N.D.	N.D.	N.D.	N.D.	N.D.	P	/	/	/	/	/	/	/	P
192	紫色塑料滤网	N.D.	N.D.	N.D.	N.D.	N.D.	P	/	/	/	/	/	/	/	P
193	PCB 板基材	N.D.	N.D.	N.D.	N.D.	2.1 × 10 ⁴	V	/	/	/	/	/	N.D.	N.D.	P
194	银色金属焊锡	N.D.	N.D.	N.D.	N.D.	—	P	/	/	/	/	/	/	/	P
195	贴片电阻	N.D.	N.D.	N.D.	N.D.	N.D.	P	/	/	/	/	/	/	/	P
196	贴片电容	N.D.	N.D.	N.D.	N.D.	N.D.	P	/	/	/	/	/	/	/	P
197	贴片二极管	N.D.	N.D.	N.D.	N.D.	N.D.	P	/	/	/	/	/	/	/	P
198	黑色芯片	N.D.	N.D.	N.D.	N.D.	N.D.	P	/	/	/	/	/	/	/	P
199	金属 LED 灯	N.D.	N.D.	N.D.	N.D.	—	P	/	/	/	/	/	/	/	P

检测结果及判定

序号	检测单元名称	筛选检测结果(mg/kg)						确证检测结果(mg/kg)							判定
		铅 (Pb)	镉 (Cd)	汞 (Hg)	总铬 (Cr)	总溴 (Br)	筛选判定	铅 (Pb)	镉 (Cd)	汞 (Hg)	六价铬 (Cr ⁶⁺)		多溴联苯 (PBBs)	多溴二苯醚 (PBDEs)	
											金属镀层	其他材料			
200	电感黑色金属绕线架	N.D.	N.D.	N.D.	N.D.	—	P	/	/	/	/	/	/	/	P
201	漆包线	N.D.	N.D.	N.D.	N.D.	—	P	/	/	/	/	/	/	/	P
202	闭合开关 PCB 板基材	N.D.	N.D.	N.D.	N.D.	2.1 × 10 ⁴	V	/	/	/	/	/	N.D.	N.D.	P
203	银色金属焊锡	N.D.	N.D.	N.D.	N.D.	—	P	/	/	/	/	/	/	/	P
204	白色塑料插座	N.D.	N.D.	N.D.	N.D.	N.D.	P	/	/	/	/	/	/	/	P
205	透明闭合开关	N.D.	N.D.	N.D.	N.D.	N.D.	P	/	/	/	/	/	/	/	P
206	金属螺丝银色镀层	N.D.	N.D.	N.D.	/	—	V	/	/	/	阴性	/	/	/	P
207	金属螺丝银色基材	N.D.	N.D.	N.D.	N.D.	—	P	/	/	/	/	/	/	/	P
208	WiFi 模块 PCB 板基材	N.D.	N.D.	N.D.	N.D.	2.0 × 10 ⁴	V	/	/	/	/	/	N.D.	N.D.	P
209	银色金属焊锡	N.D.	N.D.	N.D.	N.D.	—	P	/	/	/	/	/	/	/	P
210	贴片电阻	N.D.	N.D.	N.D.	N.D.	N.D.	P	/	/	/	/	/	/	/	P
211	贴片电容	N.D.	N.D.	N.D.	N.D.	N.D.	P	/	/	/	/	/	/	/	P
212	贴片二极管	N.D.	N.D.	N.D.	N.D.	N.D.	P	/	/	/	/	/	/	/	P
213	贴片三极管	N.D.	N.D.	N.D.	N.D.	N.D.	P	/	/	/	/	/	/	/	P
214	黑色整流桥	N.D.	N.D.	N.D.	N.D.	N.D.	P	/	/	/	/	/	/	/	P
215	白色铭牌	N.D.	N.D.	N.D.	N.D.	N.D.	P	/	/	/	/	/	/	/	P
216	银色金属屏蔽罩	N.D.	N.D.	N.D.	N.D.	—	P	/	/	/	/	/	/	/	P
217	灰色橡胶插头	N.D.	N.D.	N.D.	N.D.	N.D.	P	/	/	/	/	/	/	/	P

检测结果及判定

序号	检测单元名称	筛选检测结果(mg/kg)						确证检测结果(mg/kg)							判定
		铅 (Pb)	镉 (Cd)	汞 (Hg)	总铬 (Cr)	总溴 (Br)	筛选判定	铅 (Pb)	镉 (Cd)	汞 (Hg)	六价铬 (Cr ⁶⁺)		多溴联苯 (PBBs)	多溴二苯醚 (PBDEs)	
											金属镀层	其他材料			
218	白色塑料支架	N.D.	N.D.	N.D.	N.D.	2.0 × 10 ⁴	V	/	/	/	/	/	N.D.	N.D.	P
219	银色金属插片	N.D.	N.D.	N.D.	N.D.	—	P	/	/	/	/	/	/	/	P
220	灰色橡胶导线护套	N.D.	N.D.	N.D.	N.D.	N.D.	P	/	/	/	/	/	/	/	P
221	蓝色橡胶外被	N.D.	N.D.	N.D.	N.D.	N.D.	P	/	/	/	/	/	/	/	P
222	棕色橡胶外被	N.D.	N.D.	N.D.	N.D.	N.D.	P	/	/	/	/	/	/	/	P
223	漆包线	N.D.	N.D.	N.D.	N.D.	—	P	/	/	/	/	/	/	/	P
224	灰色橡胶插口外套	N.D.	N.D.	N.D.	N.D.	N.D.	P	/	/	/	/	/	/	/	P
225	白色塑料支架	N.D.	N.D.	N.D.	N.D.	2.1 × 10 ⁴	V	/	/	/	/	/	N.D.	N.D.	P
226	金色金属插针	N.D.	N.D.	N.D.	N.D.	—	P	/	/	/	/	/	/	/	P
227	蓝色塑料贴膜	N.D.	N.D.	N.D.	N.D.	N.D.	P	/	/	/	/	/	/	/	P
228	银色金属外壳	N.D.	N.D.	N.D.	N.D.	2.7 × 10 ⁴	V	/	/	/	/	N.D.	/	/	P
229	黑色塑料外壳	N.D.	N.D.	N.D.	N.D.	N.D.	P	/	/	/	/	/	/	/	P
230	黑色塑料支架	N.D.	N.D.	N.D.	N.D.	N.D.	P	/	/	/	/	/	/	/	P
231	PCB 板基材	N.D.	N.D.	N.D.	N.D.	2.4 × 10 ⁴	V	/	/	/	/	/	N.D.	N.D.	P
232	银色金属焊锡	N.D.	N.D.	N.D.	N.D.	—	P	/	/	/	/	/	/	/	P
233	贴片电阻	N.D.	N.D.	N.D.	N.D.	N.D.	P	/	/	/	/	/	/	/	P
234	透明胶	N.D.	N.D.	N.D.	N.D.	N.D.	P	/	/	/	/	/	/	/	P
235	黑色金属镜头主体	N.D.	N.D.	N.D.	N.D.	—	P	/	/	/	/	/	/	/	P

检测结果及判定

序号	检测单元名称	筛选检测结果(mg/kg)						确证检测结果(mg/kg)						判定	
		铅 (Pb)	镉 (Cd)	汞 (Hg)	总铬 (Cr)	总溴 (Br)	筛选判定	铅 (Pb)	镉 (Cd)	汞 (Hg)	六价铬 (Cr ⁶⁺)		多溴联苯 (PBBs)		多溴二苯醚 (PBDEs)
											金属镀层	其他材料			
236	透明玻璃镜头	N.D.	N.D.	N.D.	N.D.	—	P	/	/	/	/	/	/	/	P
237	银色金属弹簧	N.D.	N.D.	N.D.	N.D.	—	P	/	/	/	/	/	/	/	P
238	PCB 板基材	N.D.	N.D.	N.D.	N.D.	2.5 × 10 ⁴	V	/	/	/	/	/	N.D.	N.D.	P
239	银色金属焊锡	N.D.	N.D.	N.D.	N.D.	—	P	/	/	/	/	/	/	/	P
240	贴片电阻	N.D.	N.D.	N.D.	N.D.	N.D.	P	/	/	/	/	/	/	/	P
241	贴片电容	N.D.	N.D.	N.D.	N.D.	N.D.	P	/	/	/	/	/	/	/	P
242	贴片二极管	N.D.	N.D.	N.D.	N.D.	N.D.	P	/	/	/	/	/	/	/	P
243	贴片三极管	N.D.	N.D.	N.D.	N.D.	N.D.	P	/	/	/	/	/	/	/	P
244	黑色光泵	N.D.	N.D.	N.D.	N.D.	N.D.	P	/	/	/	/	/	/	/	P
245	黑色芯片	N.D.	N.D.	N.D.	N.D.	N.D.	P	/	/	/	/	/	/	/	P
246	米色塑料接口	N.D.	N.D.	N.D.	N.D.	N.D.	P	/	/	/	/	/	/	/	P
247	黑色金属螺丝	N.D.	N.D.	N.D.	N.D.	—	P	/	/	/	/	/	/	/	P
248	银色商标	N.D.	N.D.	N.D.	N.D.	N.D.	P	/	/	/	/	/	/	/	P
249	黑色塑料叶轮外壳	N.D.	N.D.	N.D.	N.D.	3.5 × 10 ⁴	V	/	/	/	/	/	N.D.	N.D.	P
250	PCB 板基材	N.D.	N.D.	N.D.	N.D.	N.D.	P	/	/	/	/	/	/	/	P
251	银色金属焊锡	N.D.	N.D.	N.D.	N.D.	—	P	/	/	/	/	/	/	/	P
252	黑色塑料叶轮	N.D.	N.D.	N.D.	N.D.	2.4 × 10 ⁴	V	/	/	/	/	/	N.D.	N.D.	P
253	银色金属轴	N.D.	N.D.	N.D.	N.D.	—	P	/	/	/	/	/	/	/	P

检测结果及判定

序号	检测单元名称	筛选检测结果(mg/kg)						确证检测结果(mg/kg)						判定	
		铅 (Pb)	镉 (Cd)	汞 (Hg)	总铬 (Cr)	总溴 (Br)	筛选判定	铅 (Pb)	镉 (Cd)	汞 (Hg)	六价铬 (Cr ⁶⁺)		多溴联苯 (PBBs)		多溴二苯醚 (PBDEs)
											金属镀层	其他材料			
254	银色金属外壳	N.D.	N.D.	N.D.	N.D.	—	P	/	/	/	/	/	/	/	P
255	黑色磁铁	/	/	/	/	—	V	N.D.	N.D.	N.D.	/	N.D.	/	/	P
256	金属螺丝黑色镀层	N.D.	N.D.	N.D.	/	—	V	/	/	/	阴性	/	/	/	P
257	金属螺丝银色基材	N.D.	N.D.	N.D.	N.D.	—	P	/	/	/	/	/	/	/	P
258	PCB 板基材	N.D.	N.D.	N.D.	N.D.	2.4 × 10 ⁴	V	/	/	/	/	/	N.D.	N.D.	P
259	银色金属焊锡	N.D.	N.D.	N.D.	N.D.	—	P	/	/	/	/	/	/	/	P
260	贴片电阻	N.D.	N.D.	N.D.	N.D.	N.D.	P	/	/	/	/	/	/	/	P
261	黑色二极管	N.D.	N.D.	N.D.	N.D.	N.D.	P	/	/	/	/	/	/	/	P
262	黑色三极管	N.D.	N.D.	N.D.	N.D.	N.D.	P	/	/	/	/	/	/	/	P
263	黑色芯片	N.D.	N.D.	N.D.	N.D.	N.D.	P	/	/	/	/	/	/	/	P
264	银色金属芯片	N.D.	N.D.	N.D.	N.D.	—	P	/	/	/	/	/	/	/	P
265	黄色元器件	N.D.	N.D.	N.D.	N.D.	N.D.	P	/	/	/	/	/	/	/	P
266	灰色橡胶外被	N.D.	N.D.	N.D.	N.D.	N.D.	P	/	/	/	/	/	/	/	P
267	红色橡胶外被	N.D.	N.D.	N.D.	N.D.	N.D.	P	/	/	/	/	/	/	/	P
268	黑色橡胶外被	N.D.	N.D.	N.D.	N.D.	N.D.	P	/	/	/	/	/	/	/	P
269	漆包线	N.D.	N.D.	N.D.	N.D.	—	P	/	/	/	/	/	/	/	P
270	米色塑料插座	N.D.	N.D.	N.D.	N.D.	N.D.	P	/	/	/	/	/	/	/	P
271	白色塑料卡子	N.D.	N.D.	N.D.	N.D.	N.D.	P	/	/	/	/	/	/	/	P

检测结果及判定

序号	检测单元名称	筛选检测结果(mg/kg)						确证检测结果(mg/kg)						判定	
		铅 (Pb)	镉 (Cd)	汞 (Hg)	总铬 (Cr)	总溴 (Br)	筛选判定	铅 (Pb)	镉 (Cd)	汞 (Hg)	六价铬 (Cr ⁶⁺)		多溴联苯 (PBBs)		多溴二苯醚 (PBDEs)
											金属镀层	其他材料			
272	银色金属电池	N.D.	N.D.	N.D.	N.D.	—	P	/	/	/	/	/	/	/	P
273	PCB 板基材	N.D.	N.D.	N.D.	N.D.	2.1 × 10 ⁴	V	/	/	/	/	/	N.D.	N.D.	P
274	银色金属焊锡	N.D.	N.D.	N.D.	N.D.	—	P	/	/	/	/	/	/	/	P
275	贴片电阻	N.D.	N.D.	N.D.	N.D.	N.D.	P	/	/	/	/	/	/	/	P
276	黑色芯片	N.D.	N.D.	N.D.	N.D.	N.D.	P	/	/	/	/	/	/	/	P
277	黄色塑料纸	N.D.	N.D.	N.D.	N.D.	N.D.	P	/	/	/	/	/	/	/	P
278	铜色金属端子	N.D.	N.D.	N.D.	N.D.	—	P	/	/	/	/	/	/	/	P

备注:

- 1) 对于 PBBs 和 PBDEs, 其筛选检测结果显示的是总 Br 含量, 对于 Cr⁶⁺, 其筛选检测结果显示的是总 Cr 含量;
- 2) “P”表示“通过”, “F”表示“不通过”, “V”表示“需进行确证检测”;
- 3) 筛选检测的限值范围见下表:

单位: mg/kg

检测物质	聚合物	金属材料	复合材料
Cd	P≤50<V<150≤F	P≤50<V<150≤F	P≤10<V<170≤F
Pb	P≤500<V<1500≤F	P≤500<V<1500≤F	P≤300<V<1700≤F
Hg	P≤500<V<1500≤F	P≤500<V<1500≤F	P≤300<V<1700≤F
Br	P≤200<V	—	P≤150<V
Cr	P≤500<V	P≤500<V	P≤300<V

- 4) “N.D.”表示“未检出 (低于报告限)”, “/”表示“未检测”, “—”表示“不适用”;
- 5) 筛选检测各检测物质的方法检出限见下表:

单位: mg/kg

检测物质	Cd	Pb	Hg	总 Br	总 Cr
报告限	10	10	10	10	10

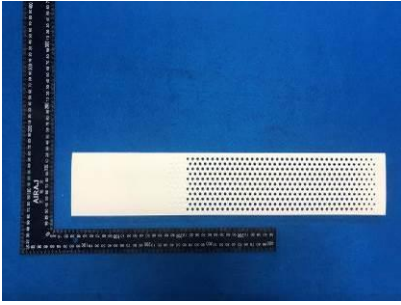
- 6) 确证检测的限值和报告限见下表:

单位: mg/kg

检测物质	Cd	Pb	Hg	其他材料中的 Cr ⁶⁺	金属材料中的 Cr ⁶⁺	PBBs	PBDEs
限值	100	1000	1000	1000	见备注 7)	1000	1000
报告限	5	5	5	5		50	50

- 7) 金属材料中 Cr⁶⁺检测结果的表述为: 由表面积为 50cm²的样品所萃取出来的溶液中测得的六价铬的浓度小于 0.02 mg/kg 的, 判定为: 阴性, 表示不含有六价铬, 合格, 用“P”表示; 反之, 判定为: 阳性, 含有六价铬, 不合格, 用“F”表示;
- 8) “▲1” 根据达标管理目录限用物质应用例外清单中编号 8.3.1: 陶瓷及玻璃: 用于除介电陶瓷电容以外的电子电气元器件 (例如, 压电器件、玻璃和陶瓷的复合材料) 中的铅含量无限值要求。

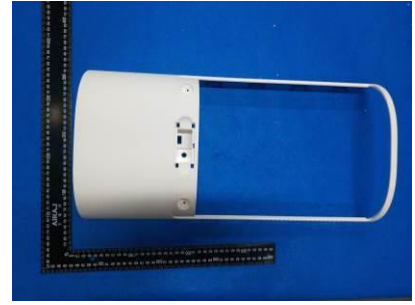
组件/部件/元器件照片



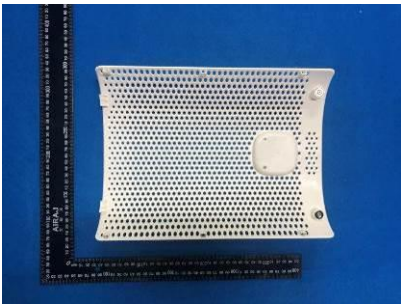
1



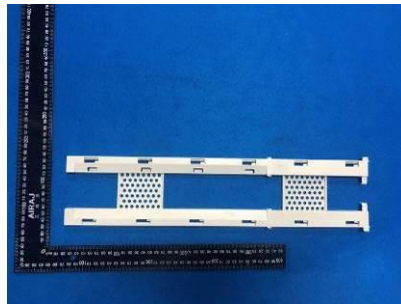
2



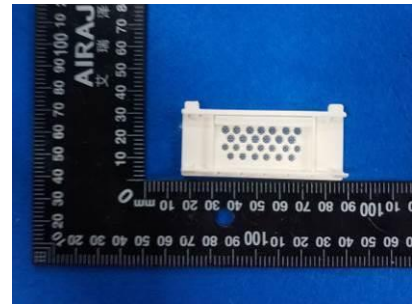
3



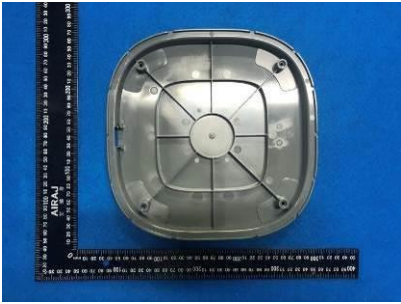
4~8



9



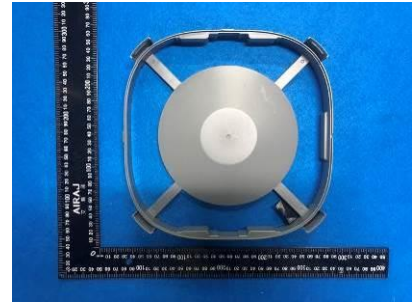
10~11



12



13~14



15~16



17~18

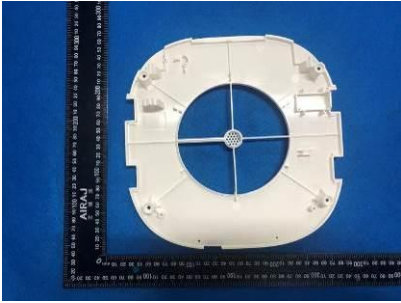


19



20~21

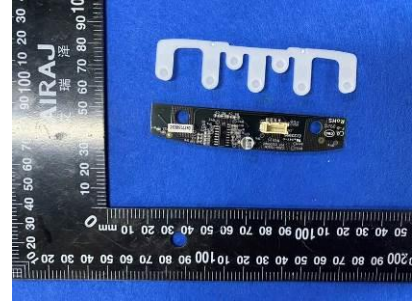
组件/部件/元器件照片



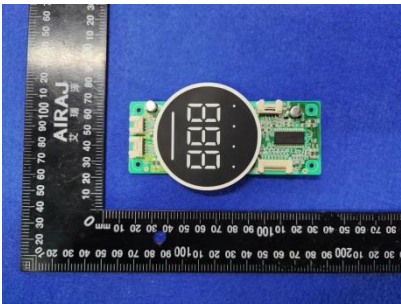
22



23~27



28~40



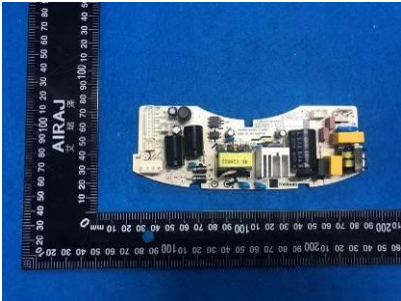
41~63



64



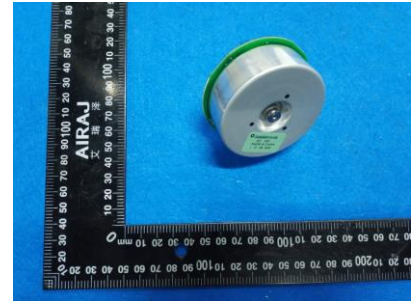
65



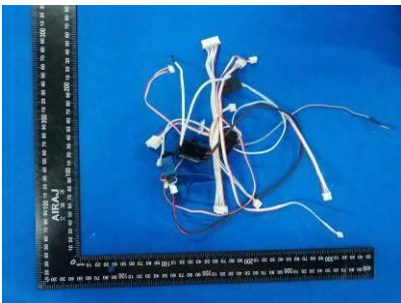
66~121



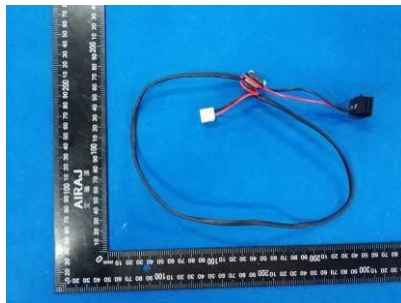
122~123



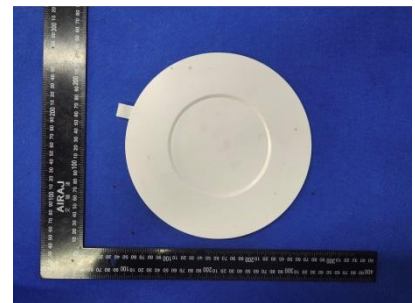
124~157



158~174

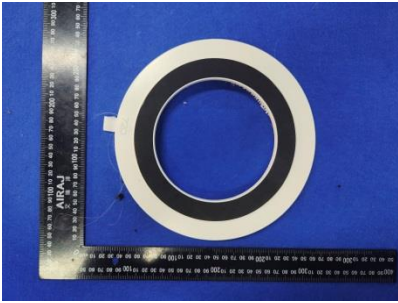


175~182

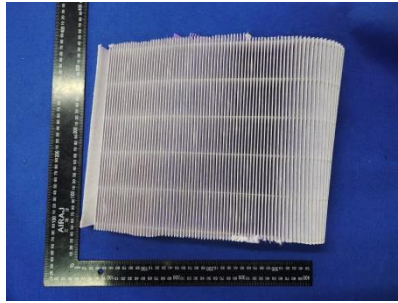


183~184

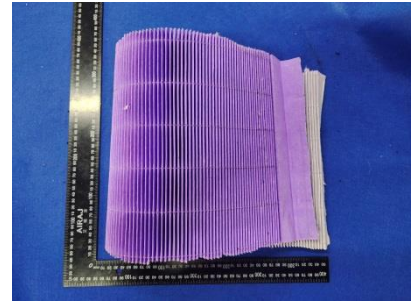
组件/部件/元器件照片



185~186



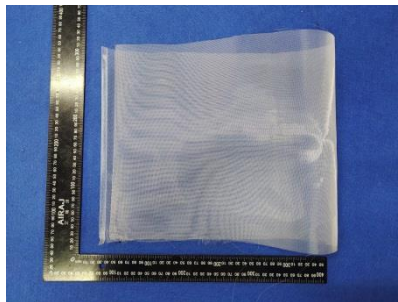
187



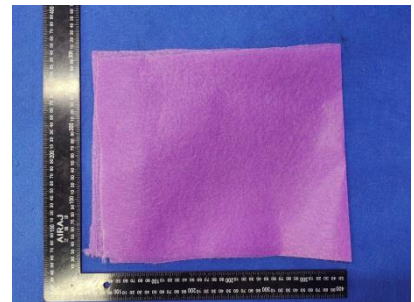
188~189



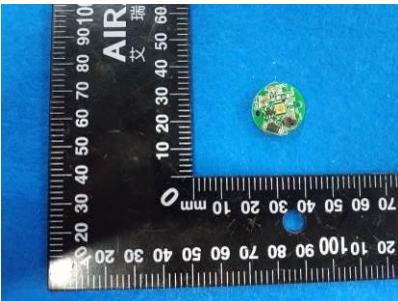
190



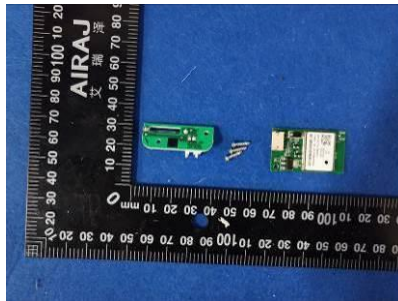
191



192



193~201



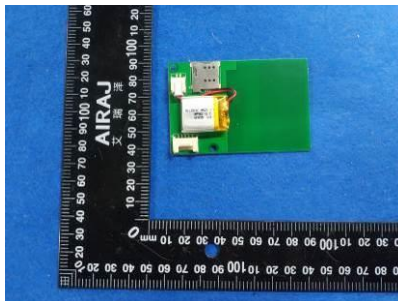
202~216



217~226



227~257



258~278



注意事项 Important

1. 报告无检测单位印章无效;

The test report is invalid without the official stamp of Lab.;

2. 未经本试验室书面同意, 不得部分地复制本报告;

Any part photocopies of the test report are forbidden without the written permission from Lab.;

3. 报告无主检、审核、批准人签名无效;

The test report is invalid without the signatures of Author and Reviewer;

4. 报告涂改无效;

The test report is invalid if altered;

5. 对检测报告若有异议, 请于收到报告之日起十五天内向检测单位提出;

Objections to the test report must be submitted to Lab. within 15 days;

6. 一般情况, 委托检测结果仅对所检测样品有效;

Generally, commission test is responsible for the tested samples only;

7. 检测结果中“—”或“N”表示“不适用”, “/”表示“未检测”, “P”表示“通过”或“合格”, “F”表示“不通过”或“不合格”。

As for the test result, “—” or “N” means “not applicable”, “/” means “not testing”, “P” means “pass” and “F” means “fail”.

***报告中未加 CMA 标志时, 检测数据和结果仅供科研、教学或内部质量控制之用。 ***

***Test data and results of the report without CMA mark will only be used for scientific research, teaching or internal quality control. ***

地址: 中国浙江省嘉兴市南湖区嘉兴总部商务花园 3 号楼

Address: Building 3, Jiaxing Advanced Business Park, Nanhu District, Jiaxing, Zhejiang, China

电话(Tel): 0573 82586881

传真(FAX): 0573 82586875

邮政编码(Post Code): 314000

E-mail: jxskb@cvc.org.cn