



中国认可
国际互认
检测
TESTING
CNAS L5510

第 1 页共 24 页

报告编号: CNRSJX2022-0159

检测报告

产品名称: 720 除味器

委托单位: 柒贰零 (北京) 健康科技有限公司

检测类别: 委托检测

嘉兴威凯检测技术有限公司

样品描述及说明

样品照片:



主检型号: RC200s 5V 1A

覆盖型号: RC200 5V 1A

覆盖型号中零部件的材料材质与主检型号中零部件的材料材质一致。

该同材质声明由委托单位柒贰零(北京)健康科技有限公司提供,实验室对此真实性不承担责任。

制 造 商: 柒贰零(北京)健康科技有限公司

制造商地址: 北京市海淀区黑泉路 8 号 1 幢 9 层 101-42、101-43 号(东升地区)

生 产 厂: 深圳市康弘智能健康科技股份有限公司

生产厂地址: 广东省深圳市龙岗区横岗街道横坪公路 89 号涌鑫工业厂区 1 号厂房第一至五层

样品拆分清单					
序号	组件/部件/元器件		检测单元		备注
	编号	名称	编号	名称	
1	1	外壳	1-1	白色塑料底壳	—
2			1-2	白色条形码纸	—
3			1-3	白色塑料盖	—
4			1-4	白色塑料支架	—
5			1-5	白色塑料内壳	—
6			1-6	白色塑料支架盖	—
7			1-7	白色塑料按钮	—
8			1-8	白色塑料框架	—
9			1-9	黑色海绵垫	—
10			1-10	白色塑料支架	—
11			1-11	金属螺丝银色镀层	—
12			1-12	金属螺丝银色基材	—
13			1-13	金属盘头螺丝银色镀层	—
14			1-14	金属盘头螺丝银色基材	—
15			1-15	米色塑料固定架	—
16			1-16	银色金属插片	—
17			1-17	米色塑料盖	—
18			1-18	金属大扁头螺丝银色镀层	—
19			1-19	金属大扁头螺丝银色基材	—
20	2	主控板	2-1	PCB 板基材	—
21			2-2	银色金属焊锡	—
22			2-3	贴片电容	—
23			2-4	贴片电阻	—
24			2-5	贴片二极管	—
25			2-6	黑色芯片	—
26			2-7	蓝色陶瓷电容	—
27			2-8	粉色色环电阻	—

样品拆分清单					
序号	组件/部件/元器件		检测单元		备注
	编号	名称	编号	名称	
28	2	主控板	2-9	银色金属引脚	—
29			2-10	灰色色环电阻	—
30			2-11	黑色二极管	—
31			2-12	电解电容黑色塑料外壳	—
32			2-13	绿色塑料外壳	—
33			2-14	银色铝壳	—
34			2-15	黄色电解纸	—
35			2-16	银色塑料膜	—
36			2-17	黑色橡胶塞	—
37			2-18	银色金属引脚	—
38			2-19	安规电容黄色塑料外壳	—
39			2-20	银色塑料膜	—
40			2-21	黄色灌封胶	—
41			2-22	变压器黑色金属支架	—
42			2-23	黑色塑料绕线架	—
43			2-24	漆包线	—
44			2-25	黄色胶带	—
45			2-26	白色塑料管	—
46			2-27	黑色塑料管	—
47			2-28	电感黑色橡胶外壳	—
48			2-29	黑色金属绕线架	—
49			2-30	漆包线	—
50			2-31	保险丝淡棕色塑料外壳	—
51			2-32	银色金属保险丝	—
52			2-33	黑色塑料底座	—
53			2-34	白色塑料接插件	—
54			2-35	白色橡胶水	—

样品拆分清单					
序号	组件/部件/元器件		检测单元		备注
	编号	名称	编号	名称	
55	3	操作板	3-1	PCB 板基材	—
56			3-2	银色金属焊锡	—
57			3-3	贴片电容	—
58			3-4	贴片电阻	—
59			3-5	贴片二极管	—
60			3-6	贴片三极管	—
61			3-7	黑色芯片	—
62			3-8	黑色金属电感	—
63			3-9	白色 LED 灯	—
64			3-10	黄色 LED 灯	—
65			3-11	开关黑色塑料底壳	—
66			3-12	黑色塑料支架	—
67			3-13	黑色橡胶垫	—
68			3-14	黑色塑料按钮	—
69			3-15	银色金属振片	—
70			3-16	电解电容银色铝壳	—
71			3-17	黄色电解纸	—
72			3-18	银色塑料膜	—
73			3-19	黑色橡胶塞	—
74			3-20	银色金属引脚	—
75			3-21	黑色塑料底壳	—
76			3-22	黑色塑料灯柱	—
77			3-23	黑色橡胶外壳	—
78			3-24	蓝色灯珠	—
79			3-25	银色金属引脚	—
80			3-26	米色塑料接插件	—
81			3-27	PCB 板基材	—

样品拆分清单					
序号	组件/部件/元器件		检测单元		备注
	编号	名称	编号	名称	
82	4	风机	3-28	银色金属焊锡	—
83			3-29	银色金属晶振	—
84			3-30	银色金属盖	—
85			3-31	白色二维码纸	—
86			4-1	黑色塑料外壳	—
87			4-2	黑色塑料叶轮	—
88			4-3	银色金属内壳	—
89			4-4	黑色磁铁	—
90			4-5	银色金属轴	—
91			4-6	PCB 板基材	—
92			4-7	银色金属焊锡	—
93			4-8	黑色芯片	—
94			4-9	银色铭牌纸	—
95			4-10	米色塑料绕线架	—
96			4-11	漆包线	—
97			4-12	银色金属硅钢片	—
98			4-13	银色金属轴套	—
99			4-14	白色塑料垫片	—
100			4-15	红色橡胶垫圈	—
101			5	线束组件	5-1
102	5-2	棕色橡胶外被			—
103	5-3	紫红色橡胶外被			—
104	5-4	红色橡胶外被			—
105	5-5	白色橡胶外被 (细)			—
106	5-6	红白色橡胶外被			—
107	5-7	白色橡胶外被 (粗)			—
108	5-8	黑色橡胶外被 (粗)			—

样品拆分清单					
序号	组件/部件/元器件		检测单元		备注
	编号	名称	编号	名称	
109	5	线束组件	5-9	银色金属丝	—
110			5-10	白色塑料接插件	—
111			5-11	黑色橡胶热缩管	—
112			5-12	银色金属触片	—
113			5-13	发生器黑色塑料外壳	—
114			5-14	黑色灌封胶	—
115			5-15	白色铭牌纸	—
116			5-16	银色金属弹簧	—
117			5-17	透明塑料管	—
118			5-18	银色金属内壳	—
119			5-19	白色橡胶端盖	—

检测结果及判定														
序号	检测单元名称	筛选检测结果(mg/kg)						确证检测结果(mg/kg)						判定
		铅 (Pb)	镉 (Cd)	汞 (Hg)	总铬 (Cr)	总溴 (Br)	筛选判定	铅 (Pb)	镉 (Cd)	汞 (Hg)	六价铬 (Cr ⁶⁺)	多溴联苯 (PBBs)	多溴二苯醚 (PBDEs)	

											金属 镀层	其他 材料				
1	白色塑料底壳	N.D.	N.D.	N.D.	N.D.	N.D.	P	/	/	/	/	/	/	/	/	P
2	白色条形码纸	N.D.	N.D.	N.D.	N.D.	N.D.	P	/	/	/	/	/	/	/	/	P
3	白色塑料盖	N.D.	N.D.	N.D.	N.D.	N.D.	P	/	/	/	/	/	/	/	/	P
4	白色塑料支架	N.D.	N.D.	N.D.	N.D.	N.D.	P	/	/	/	/	/	/	/	/	P
5	白色塑料内壳	N.D.	N.D.	N.D.	N.D.	N.D.	P	/	/	/	/	/	/	/	/	P
6	白色塑料支架盖	N.D.	N.D.	N.D.	N.D.	N.D.	P	/	/	/	/	/	/	/	/	P
7	白色塑料按钮	N.D.	N.D.	N.D.	N.D.	N.D.	P	/	/	/	/	/	/	/	/	P
8	白色塑料框架	N.D.	N.D.	N.D.	N.D.	N.D.	P	/	/	/	/	/	/	/	/	P
9	黑色海绵垫	N.D.	N.D.	N.D.	N.D.	N.D.	P	/	/	/	/	/	/	/	/	P
10	白色塑料支架	N.D.	N.D.	N.D.	N.D.	N.D.	P	/	/	/	/	/	/	/	/	P
11	金属螺丝银色镀层	N.D.	N.D.	N.D.	/	—	V	/	/	/	阴性	/	/	/	/	P
12	金属螺丝银色基材	N.D.	N.D.	N.D.	N.D.	—	P	/	/	/	/	/	/	/	/	P
13	金属盘头螺丝银色镀层	N.D.	N.D.	N.D.	/	—	V	/	/	/	阴性	/	/	/	/	P
14	金属盘头螺丝银色基材	N.D.	N.D.	N.D.	N.D.	—	P	/	/	/	/	/	/	/	/	P
15	米色塑料固定架	N.D.	N.D.	N.D.	N.D.	N.D.	P	/	/	/	/	/	/	/	/	P
16	银色金属插片	N.D.	N.D.	N.D.	N.D.	—	P	/	/	/	/	/	/	/	/	P
17	米色塑料盖	N.D.	N.D.	N.D.	N.D.	N.D.	P	/	/	/	/	/	/	/	/	P
18	金属大扁头螺丝银色镀层	N.D.	N.D.	N.D.	/	—	V	/	/	/	阴性	/	/	/	/	P
19	金属大扁头螺丝银色基材	N.D.	N.D.	N.D.	N.D.	—	P	/	/	/	/	/	/	/	/	P
20	PCB 板基材	N.D.	N.D.	N.D.	N.D.	4.0 × 10 ⁴	V	/	/	/	/	/	N.D.	N.D.	N.D.	P
21	银色金属焊锡	N.D.	N.D.	N.D.	N.D.	—	P	/	/	/	/	/	/	/	/	P
22	贴片电容	N.D.	N.D.	N.D.	N.D.	N.D.	P	/	/	/	/	/	/	/	/	P

检测结果及判定

序号	检测单元名称	筛选检测结果(mg/kg)						确证检测结果(mg/kg)						判定	
		铅(Pb)	镉(Cd)	汞(Hg)	总铬(Cr)	总溴(Br)	筛选判定	铅(Pb)	镉(Cd)	汞(Hg)	六价铬(Cr ⁶⁺)		多溴联苯(PBBs)		多溴二苯醚(PBDEs)
											金属镀层	其他材料			
23	贴片电阻	N.D.	N.D.	N.D.	N.D.	N.D.	P	/	/	/	/	/	/	/	P
24	贴片二极管	N.D.	N.D.	N.D.	N.D.	N.D.	P	/	/	/	/	/	/	/	P
25	黑色芯片	N.D.	N.D.	N.D.	N.D.	N.D.	P	/	/	/	/	/	/	/	P
26	蓝色陶瓷电容	N.D.	N.D.	N.D.	N.D.	—	P	/	/	/	/	/	/	/	P
27	粉色色环电阻	N.D.	N.D.	N.D.	N.D.	—	P	/	/	/	/	/	/	/	P
28	银色金属引脚	N.D.	N.D.	N.D.	N.D.	—	P	/	/	/	/	/	/	/	P
29	灰色色环电阻	N.D.	N.D.	N.D.	N.D.	—	P	/	/	/	/	/	/	/	P
30	黑色二极管	N.D.	N.D.	N.D.	N.D.	N.D.	P	/	/	/	/	/	/	/	P
31	电解电容黑色塑料外壳	N.D.	N.D.	N.D.	N.D.	N.D.	P	/	/	/	/	/	/	/	P
32	绿色塑料外壳	N.D.	N.D.	N.D.	N.D.	N.D.	P	/	/	/	/	/	/	/	P
33	银色铝壳	N.D.	N.D.	N.D.	N.D.	—	P	/	/	/	/	/	/	/	P
34	黄色电解纸	N.D.	N.D.	N.D.	N.D.	N.D.	P	/	/	/	/	/	/	/	P
35	银色塑料膜	N.D.	N.D.	N.D.	N.D.	N.D.	P	/	/	/	/	/	/	/	P
36	黑色橡胶塞	N.D.	N.D.	N.D.	N.D.	N.D.	P	/	/	/	/	/	/	/	P
37	银色金属引脚	N.D.	N.D.	N.D.	N.D.	—	P	/	/	/	/	/	/	/	P
38	安规电容黄色塑料外壳	N.D.	N.D.	N.D.	N.D.	3.2 × 10 ⁴	V	/	/	/	/	/	N.D.	N.D.	P
39	银色塑料膜	N.D.	N.D.	N.D.	N.D.	N.D.	P	/	/	/	/	/	/	/	P
40	黄色灌封胶	N.D.	N.D.	N.D.	N.D.	2.7 × 10 ⁴	V	/	/	/	/	/	N.D.	N.D.	P

检测结果及判定

序号	检测单元名称	筛选检测结果(mg/kg)						确证检测结果(mg/kg)						判定	
		铅 (Pb)	镉 (Cd)	汞 (Hg)	总铬 (Cr)	总溴 (Br)	筛选判定	铅 (Pb)	镉 (Cd)	汞 (Hg)	六价铬 (Cr ⁶⁺)		多溴联苯 (PBBs)		多溴二苯醚 (PBDEs)
											金属镀层	其他材料			
41	变压器黑色金属支架	N.D.	N.D.	N.D.	N.D.	—	P	/	/	/	/	/	/	/	P
42	黑色塑料绕线架	N.D.	N.D.	N.D.	N.D.	N.D.	P	/	/	/	/	/	/	/	P
43	漆包线	N.D.	N.D.	N.D.	N.D.	—	P	/	/	/	/	/	/	/	P
44	黄色胶带	N.D.	N.D.	N.D.	N.D.	N.D.	P	/	/	/	/	/	/	/	P
45	白色塑料管	N.D.	N.D.	N.D.	N.D.	N.D.	P	/	/	/	/	/	/	/	P
46	黑色塑料管	N.D.	N.D.	N.D.	N.D.	N.D.	P	/	/	/	/	/	/	/	P
47	电感黑色橡胶外壳	N.D.	N.D.	N.D.	N.D.	N.D.	P	/	/	/	/	/	/	/	P
48	黑色金属绕线架	N.D.	N.D.	N.D.	N.D.	—	P	/	/	/	/	/	/	/	P
49	漆包线	N.D.	N.D.	N.D.	N.D.	—	P	/	/	/	/	/	/	/	P
50	保险丝淡棕色塑料外壳	N.D.	N.D.	N.D.	N.D.	N.D.	P	/	/	/	/	/	/	/	P
51	银色金属保险丝	N.D.	N.D.	N.D.	N.D.	—	P	/	/	/	/	/	/	/	P
52	黑色塑料底座	N.D.	N.D.	N.D.	N.D.	N.D.	P	/	/	/	/	/	/	/	P
53	白色塑料接插件	N.D.	N.D.	N.D.	N.D.	N.D.	P	/	/	/	/	/	/	/	P
54	白色橡胶水	N.D.	N.D.	N.D.	N.D.	N.D.	P	/	/	/	/	/	/	/	P
55	PCB 板基材	N.D.	N.D.	N.D.	N.D.	5.7 × 10 ⁴	V	/	/	/	/	/	N.D.	N.D.	P
56	银色金属焊锡	N.D.	N.D.	N.D.	N.D.	—	P	/	/	/	/	/	/	/	P
57	贴片电容	N.D.	N.D.	N.D.	N.D.	N.D.	P	/	/	/	/	/	/	/	P
58	贴片电阻	N.D.	N.D.	N.D.	N.D.	N.D.	P	/	/	/	/	/	/	/	P

检测结果及判定

序号	检测单元名称	筛选检测结果(mg/kg)						确证检测结果(mg/kg)						判定	
		铅 (Pb)	镉 (Cd)	汞 (Hg)	总铬 (Cr)	总溴 (Br)	筛选判定	铅 (Pb)	镉 (Cd)	汞 (Hg)	六价铬 (Cr ⁶⁺)		多溴联苯 (PBBs)		多溴二苯醚 (PBDEs)
											金属镀层	其他材料			
59	贴片二极管	N.D.	N.D.	N.D.	N.D.	N.D.	P	/	/	/	/	/	/	/	P
60	贴片三极管	N.D.	N.D.	N.D.	N.D.	N.D.	P	/	/	/	/	/	/	/	P
61	黑色芯片	N.D.	N.D.	N.D.	N.D.	N.D.	P	/	/	/	/	/	/	/	P
62	黑色金属电感	N.D.	N.D.	N.D.	N.D.	—	P	/	/	/	/	/	/	/	P
63	白色 LED 灯	N.D.	N.D.	N.D.	N.D.	N.D.	P	/	/	/	/	/	/	/	P
64	黄色 LED 灯	N.D.	N.D.	N.D.	N.D.	N.D.	P	/	/	/	/	/	/	/	P
65	开关黑色塑料底壳	N.D.	N.D.	N.D.	N.D.	N.D.	P	/	/	/	/	/	/	/	P
66	黑色塑料支架	N.D.	N.D.	N.D.	N.D.	N.D.	P	/	/	/	/	/	/	/	P
67	黑色橡胶垫	N.D.	N.D.	N.D.	N.D.	N.D.	P	/	/	/	/	/	/	/	P
68	黑色塑料按钮	N.D.	N.D.	N.D.	N.D.	N.D.	P	/	/	/	/	/	/	/	P
69	银色金属振片	N.D.	N.D.	N.D.	N.D.	—	P	/	/	/	/	/	/	/	P
70	电解电容银色铝壳	N.D.	N.D.	N.D.	N.D.	—	P	/	/	/	/	/	/	/	P
71	黄色电解纸	N.D.	N.D.	N.D.	N.D.	N.D.	P	/	/	/	/	/	/	/	P
72	银色塑料膜	N.D.	N.D.	N.D.	N.D.	N.D.	P	/	/	/	/	/	/	/	P
73	黑色橡胶塞	N.D.	N.D.	N.D.	N.D.	N.D.	P	/	/	/	/	/	/	/	P
74	银色金属引脚	N.D.	N.D.	N.D.	N.D.	—	P	/	/	/	/	/	/	/	P
75	黑色塑料底壳	N.D.	N.D.	N.D.	N.D.	N.D.	P	/	/	/	/	/	/	/	P
76	黑色塑料灯柱	N.D.	N.D.	N.D.	N.D.	306	V	/	/	/	/	/	N.D.	N.D.	P

检测结果及判定

序号	检测单元名称	筛选检测结果(mg/kg)						确证检测结果(mg/kg)						判定	
		铅(Pb)	镉(Cd)	汞(Hg)	总铬(Cr)	总溴(Br)	筛选判定	铅(Pb)	镉(Cd)	汞(Hg)	六价铬(Cr ⁶⁺)		多溴联苯(PBBs)		多溴二苯醚(PBDEs)
											金属镀层	其他材料			
77	黑色橡胶外壳	N.D.	N.D.	N.D.	N.D.	N.D.	P	/	/	/	/	/	/	/	P
78	蓝色灯珠	N.D.	N.D.	N.D.	N.D.	N.D.	P	/	/	/	/	/	/	/	P
79	银色金属引脚	N.D.	N.D.	N.D.	N.D.	—	P	/	/	/	/	/	/	/	P
80	米色塑料接插件	N.D.	N.D.	N.D.	N.D.	1.9 × 10 ⁵	V	/	/	/	/	/	N.D.	N.D.	P
81	PCB 板基材	N.D.	N.D.	N.D.	N.D.	2.3 × 10 ⁴	V	/	/	/	/	/	N.D.	N.D.	P
82	银色金属焊锡	N.D.	N.D.	N.D.	N.D.	—	P	/	/	/	/	/	/	/	P
83	银色金属晶振	N.D.	N.D.	N.D.	N.D.	—	P	/	/	/	/	/	/	/	P
84	银色金属盖	N.D.	N.D.	N.D.	N.D.	—	P	/	/	/	/	/	/	/	P
85	白色二维码纸	N.D.	N.D.	N.D.	N.D.	N.D.	P	/	/	/	/	/	/	/	P
86	黑色塑料外壳	N.D.	N.D.	N.D.	N.D.	1570	V	/	/	/	/	/	N.D.	N.D.	P
87	黑色塑料叶轮	N.D.	N.D.	N.D.	N.D.	1756	V	/	/	/	/	/	N.D.	N.D.	P
88	银色金属内壳	N.D.	N.D.	N.D.	N.D.	—	P	/	/	/	/	/	/	/	P
89	黑色磁铁	/	/	/	/	—	V	N.D.	N.D.	N.D.	/	N.D.	/	/	P
90	银色金属轴	N.D.	N.D.	N.D.	N.D.	—	P	/	/	/	/	/	/	/	P
91	PCB 板基材	N.D.	N.D.	N.D.	N.D.	2.5 × 10 ⁴	V	/	/	/	/	/	N.D.	N.D.	P
92	银色金属焊锡	N.D.	N.D.	N.D.	N.D.	—	P	/	/	/	/	/	/	/	P
93	黑色芯片	N.D.	N.D.	N.D.	N.D.	N.D.	P	/	/	/	/	/	/	/	P
94	银色铭牌纸	N.D.	N.D.	N.D.	N.D.	N.D.	P	/	/	/	/	/	/	/	P

检测结果及判定

序号	检测单元名称	筛选检测结果(mg/kg)						确证检测结果(mg/kg)							判定
		铅(Pb)	镉(Cd)	汞(Hg)	总铬(Cr)	总溴(Br)	筛选判定	铅(Pb)	镉(Cd)	汞(Hg)	六价铬(Cr ⁶⁺)		多溴联苯(PBBs)	多溴二苯醚(PBDEs)	
											金属镀层	其他材料			
95	米色塑料绕线架	N.D.	N.D.	N.D.	N.D.	4.6 × 10 ⁴	V	/	/	/	/	/	N.D.	N.D.	P
96	漆包线	N.D.	N.D.	N.D.	N.D.	—	P	/	/	/	/	/	/	/	P
97	银色金属硅钢片	N.D.	N.D.	N.D.	N.D.	—	P	/	/	/	/	/	/	/	P
98	银色金属轴套	N.D.	N.D.	N.D.	N.D.	—	P	/	/	/	/	/	/	/	P
99	白色塑料垫片	N.D.	N.D.	N.D.	N.D.	N.D.	P	/	/	/	/	/	/	/	P
100	红色橡胶垫圈	N.D.	N.D.	N.D.	N.D.	N.D.	P	/	/	/	/	/	/	/	P
101	黑色橡胶外被(细)	N.D.	N.D.	N.D.	N.D.	N.D.	P	/	/	/	/	/	/	/	P
102	棕色橡胶外被	N.D.	N.D.	N.D.	N.D.	N.D.	P	/	/	/	/	/	/	/	P
103	紫红色橡胶外被	N.D.	N.D.	N.D.	N.D.	N.D.	P	/	/	/	/	/	/	/	P
104	红色橡胶外被	N.D.	N.D.	N.D.	N.D.	N.D.	P	/	/	/	/	/	/	/	P
105	白色橡胶外被(细)	N.D.	N.D.	N.D.	N.D.	N.D.	P	/	/	/	/	/	/	/	P
106	红白色橡胶外被	N.D.	N.D.	N.D.	N.D.	N.D.	P	/	/	/	/	/	/	/	P
107	白色橡胶外被(粗)	N.D.	N.D.	N.D.	N.D.	N.D.	P	/	/	/	/	/	/	/	P
108	黑色橡胶外被(粗)	N.D.	N.D.	N.D.	N.D.	N.D.	P	/	/	/	/	/	/	/	P
109	银色金属丝	N.D.	N.D.	N.D.	N.D.	—	P	/	/	/	/	/	/	/	P
110	白色塑料接插件	N.D.	N.D.	N.D.	N.D.	N.D.	P	/	/	/	/	/	/	/	P
111	黑色橡胶热缩管	N.D.	N.D.	N.D.	N.D.	N.D.	P	/	/	/	/	/	/	/	P
112	银色金属触片	N.D.	N.D.	N.D.	N.D.	—	P	/	/	/	/	/	/	/	P

检测结果及判定

序号	检测单元名称	筛选检测结果(mg/kg)						确证检测结果(mg/kg)							判定
		铅 (Pb)	镉 (Cd)	汞 (Hg)	总铬 (Cr)	总溴 (Br)	筛选判定	铅 (Pb)	镉 (Cd)	汞 (Hg)	六价铬 (Cr ⁶⁺)		多溴联苯 (PBBs)	多溴二苯醚 (PBDEs)	
											金属镀层	其他材料			
113	发生器黑色塑料外壳	N.D.	N.D.	N.D.	N.D.	4.1 × 10 ⁴	V	/	/	/	/	/	N.D.	N.D.	P
114	黑色灌封胶	N.D.	N.D.	N.D.	N.D.	N.D.	P	/	/	/	/	/	/	/	P
115	白色铭牌纸	N.D.	N.D.	N.D.	N.D.	N.D.	P	/	/	/	/	/	/	/	P
116	银色金属弹簧	N.D.	N.D.	N.D.	1.2 × 10 ⁵	—	V	/	/	/	/	N.D.	/	/	P
117	透明塑料管	N.D.	N.D.	N.D.	N.D.	N.D.	P	/	/	/	/	/	/	/	P
118	银色金属内壳	N.D.	N.D.	N.D.	1.4 × 10 ⁵	—	V	/	/	/	/	N.D.	/	/	P
119	白色橡胶端盖	N.D.	N.D.	N.D.	N.D.	N.D.	P	/	/	/	/	/	/	/	P

备注:

- 1) 对于 PBBs 和 PBDEs, 其筛选检测结果显示的是总 Br 含量, 对于 Cr⁶⁺, 其筛选检测结果显示的是总 Cr 含量;
- 2) “P”表示“通过”, “F”表示“不通过”, “V”表示“需进行确证检测”;
- 3) 筛选检测的限值范围见下表:

单位: mg/kg

检测物质	聚合物	金属材料	复合材料
Cd	P≤50<V<150≤F	P≤50<V<150≤F	P≤10<V<170≤F
Pb	P≤500<V<1500≤F	P≤500<V<1500≤F	P≤300<V<1700≤F
Hg	P≤500<V<1500≤F	P≤500<V<1500≤F	P≤300<V<1700≤F
Br	P≤200<V	—	P≤150<V
Cr	P≤500<V	P≤500<V	P≤300<V

- 4) “N.D.”表示“未检出(低于报告限)”, “/”表示“未检测”, “—”表示“不适用”;
- 5) 筛选检测各检测物质的报告限见下表:

单位: mg/kg

检测物质	Cd	Pb	Hg	总 Br	总 Cr
报告限	10	10	10	10	10

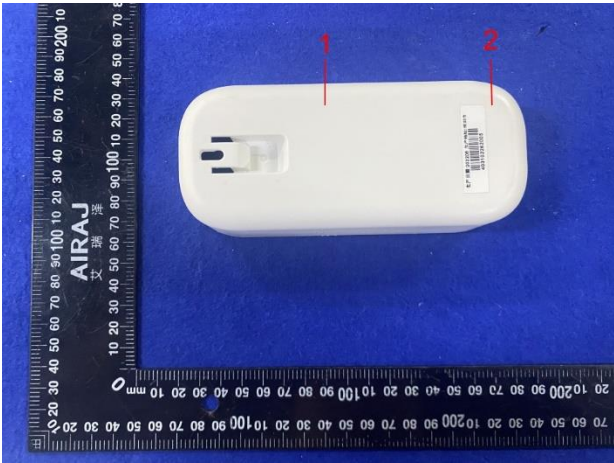
- 6) 确证检测的限值和报告限见下表:

单位: mg/kg

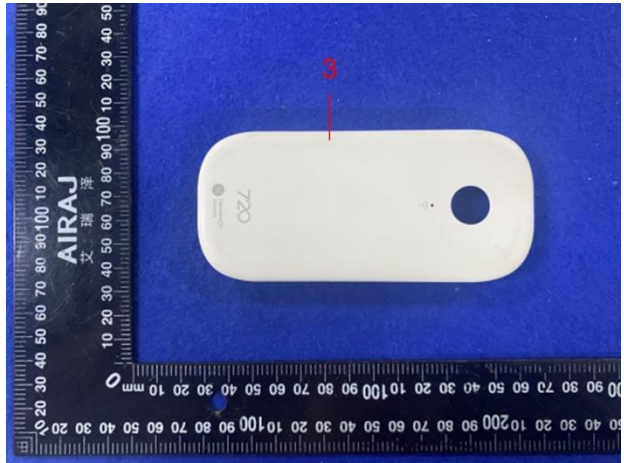
检测物质	Cd	Pb	Hg	其他材料中的 Cr ⁶⁺	金属镀层中的 Cr ⁶⁺	PBBs	PBDEs
限值	100	1000	1000	1000	见备注 7)	1000	1000
报告限	5	5	5	5		50	50

- 7) 金属镀层中 Cr⁶⁺检测结果的表述为: 由表面积为 50cm² 的样品所萃取出来的溶液中测得的六价铬的浓度小于 0.02 mg/kg 的, 判定为: 阴性, 表示不含有六价铬, 合格, 用“P”表示; 反之, 判定为: 阳性, 含有六价铬, 不合格, 用“F”表示。

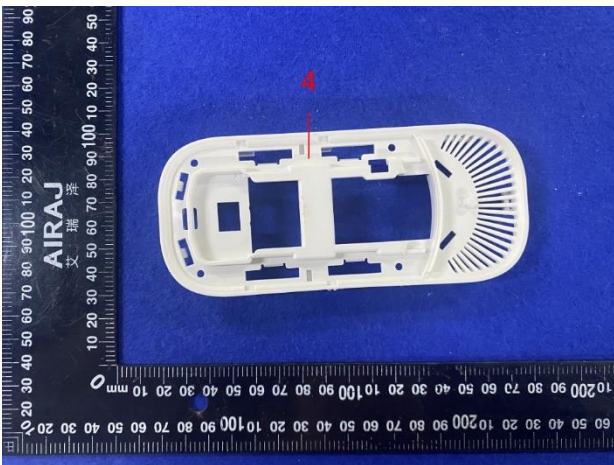
组件/部件/元器件照片



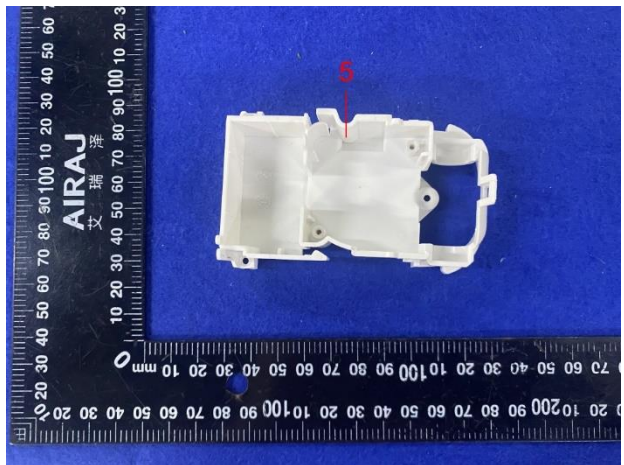
1~2



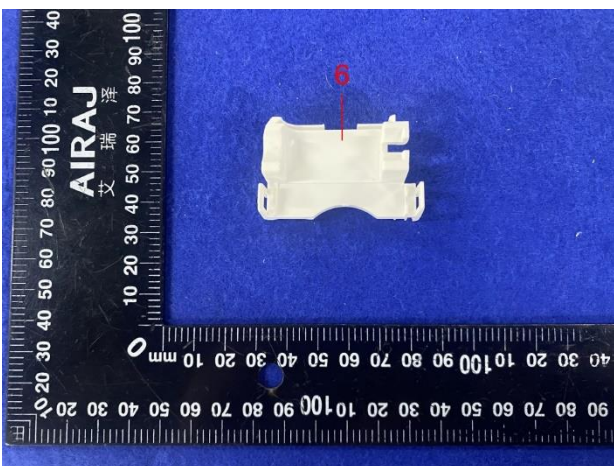
3



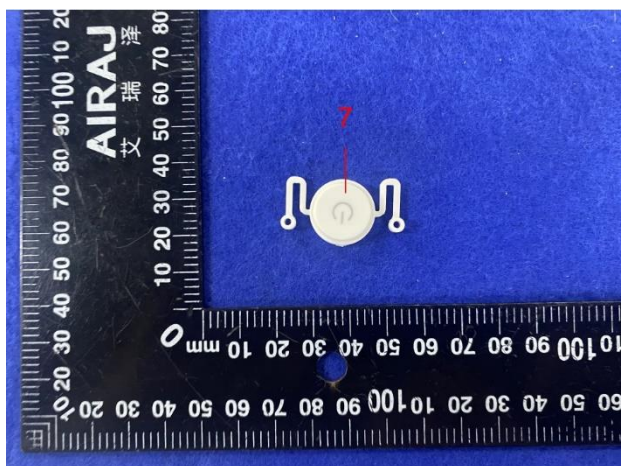
4



5

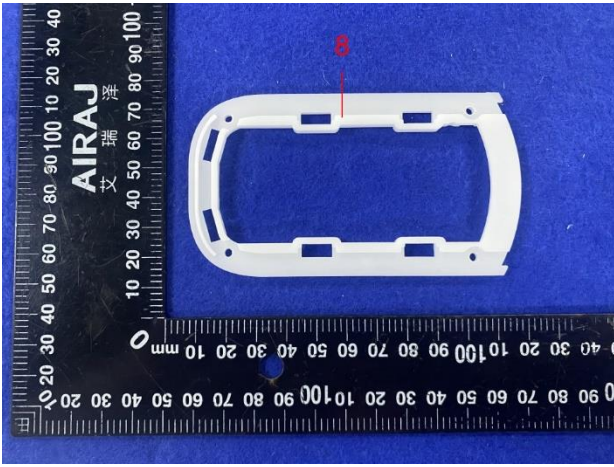


6

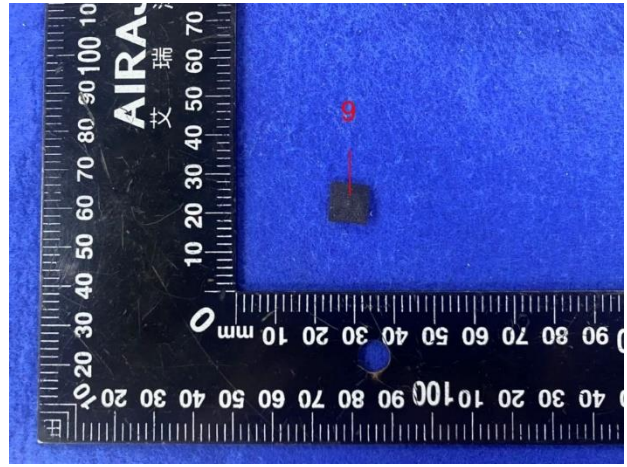


7

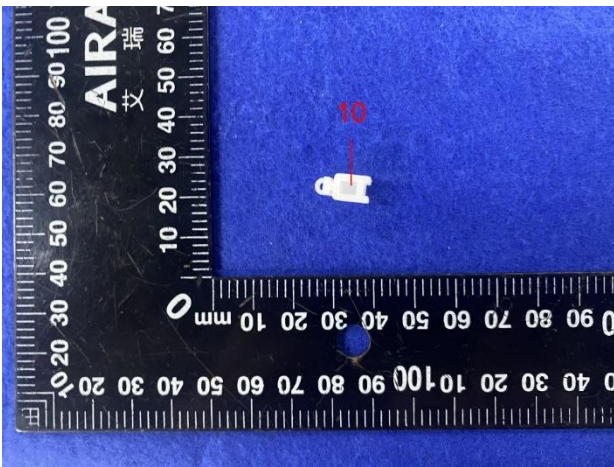
组件/部件/元器件照片



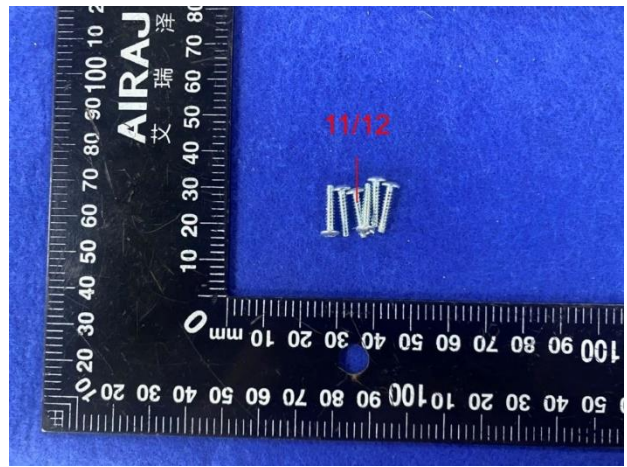
8



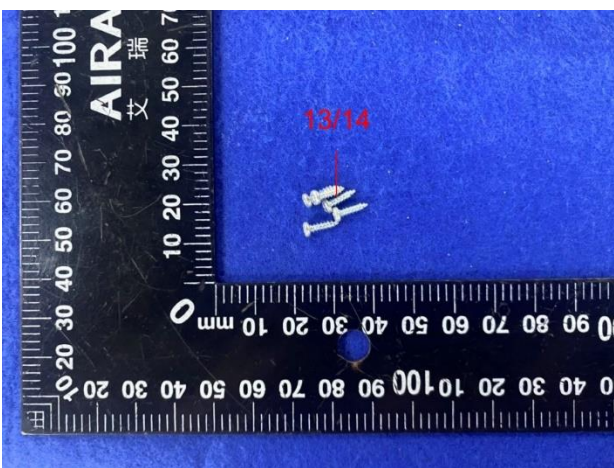
9



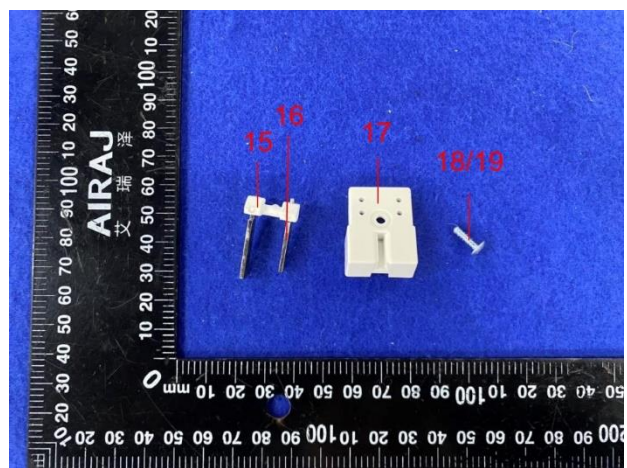
10



11~12

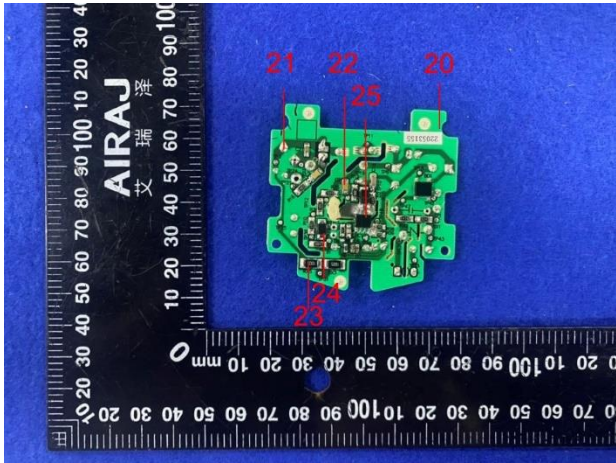


13~14

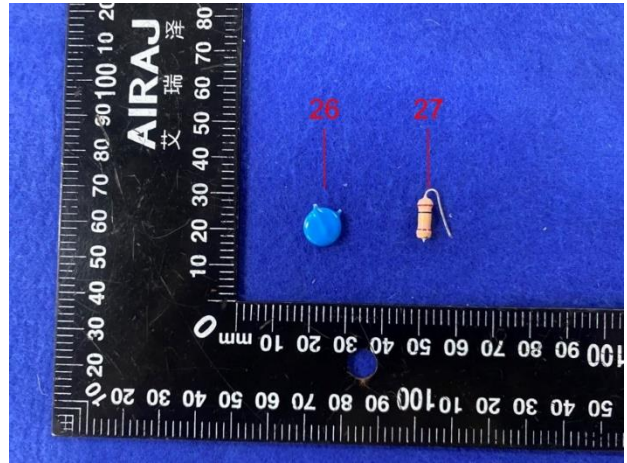


15~19

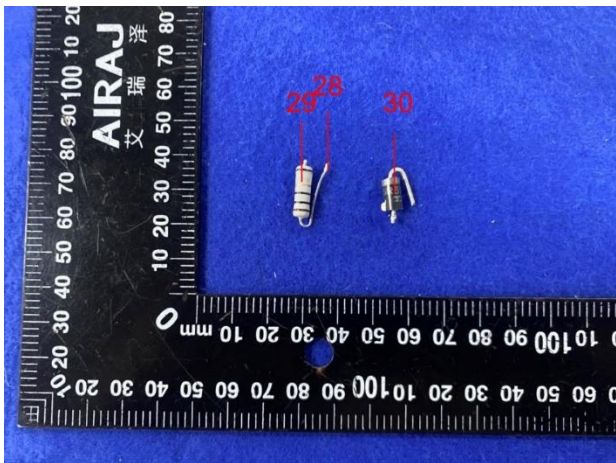
组件/部件/元器件照片



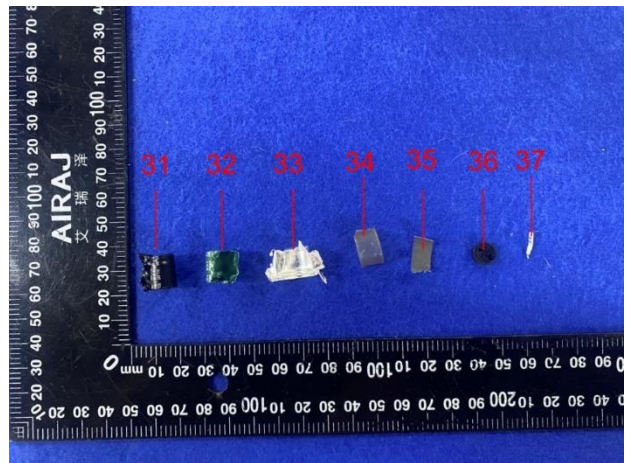
20~25



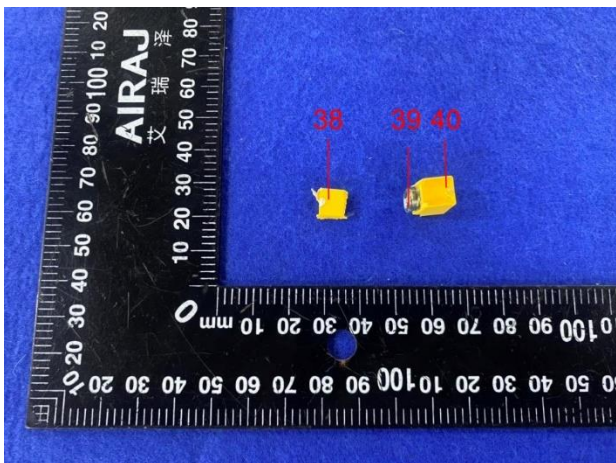
26~27



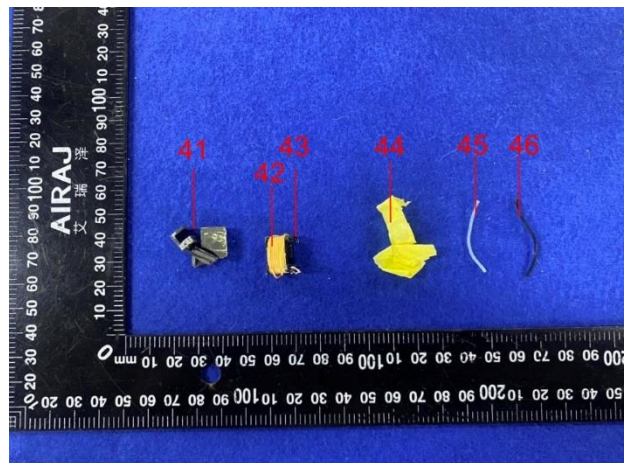
28~30



31~37

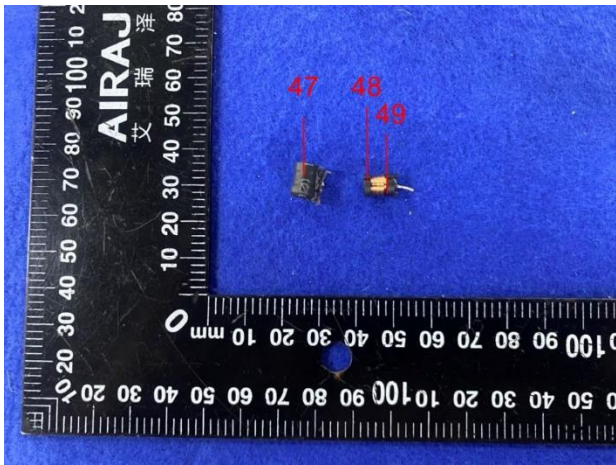


38~40

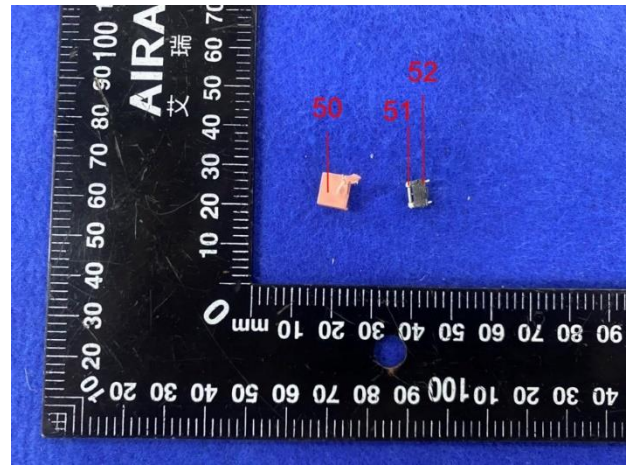


41~46

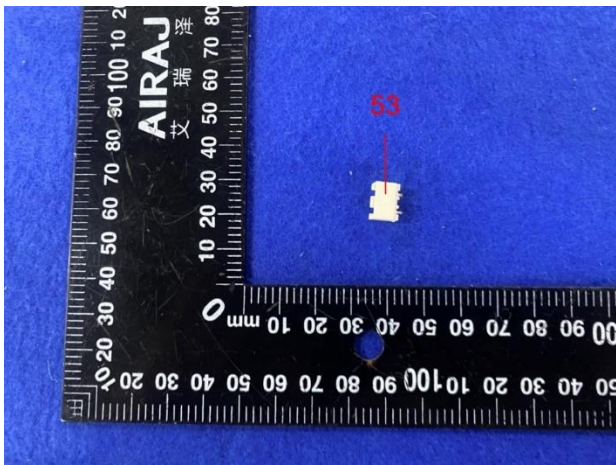
组件/部件/元器件照片



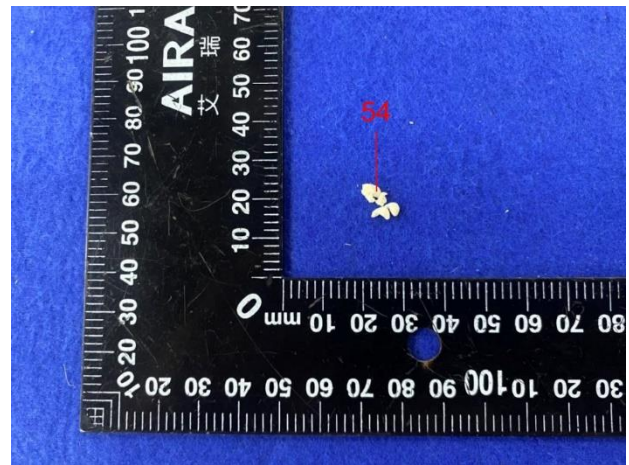
47~49



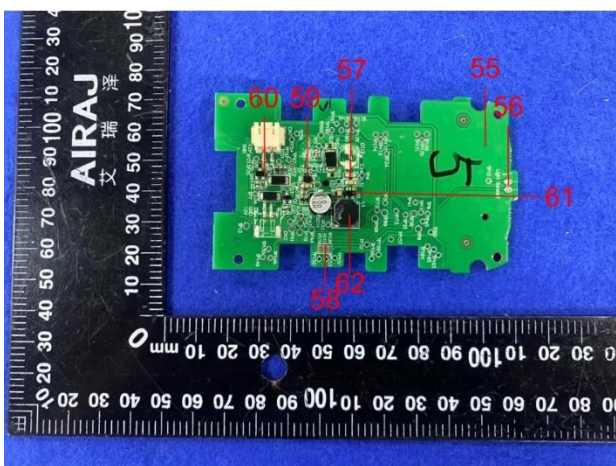
50~52



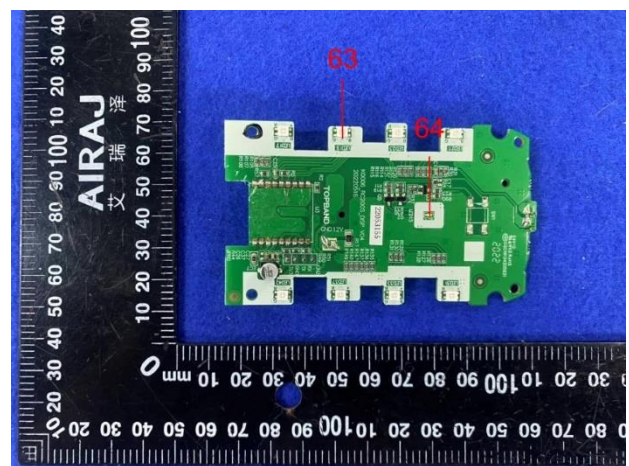
53



54

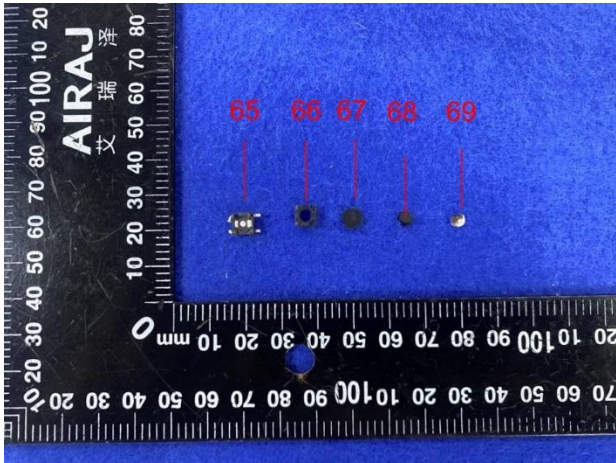


55~62



63~64

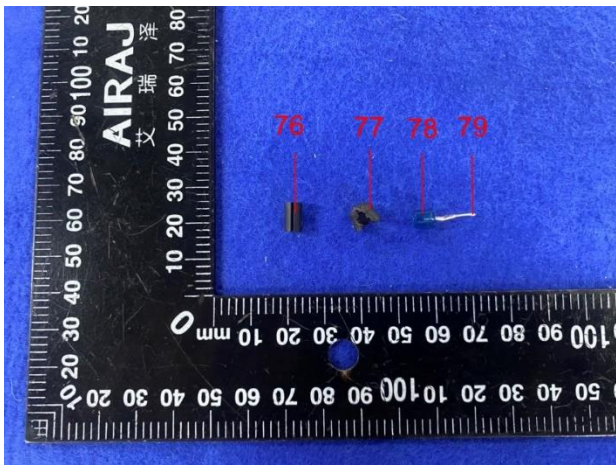
组件/部件/元器件照片



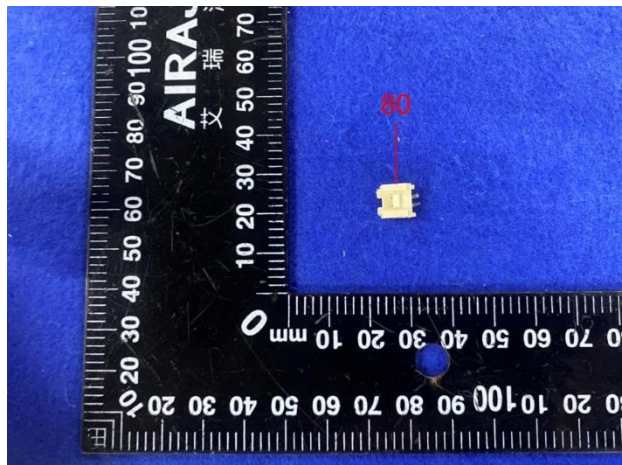
65~69



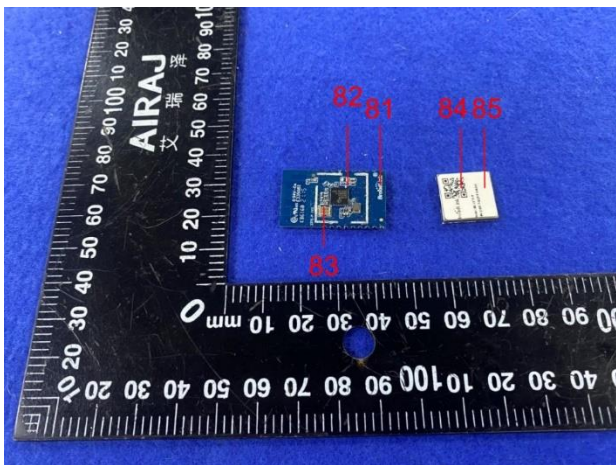
70~75



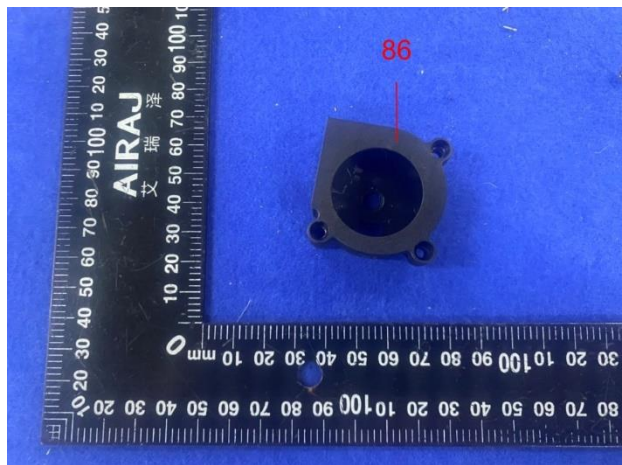
76~79



80

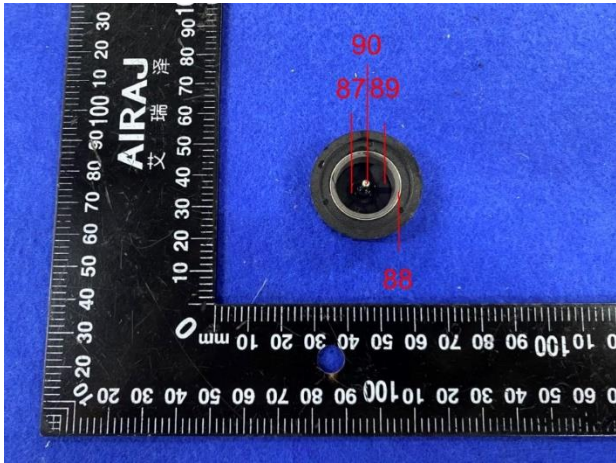


81~85

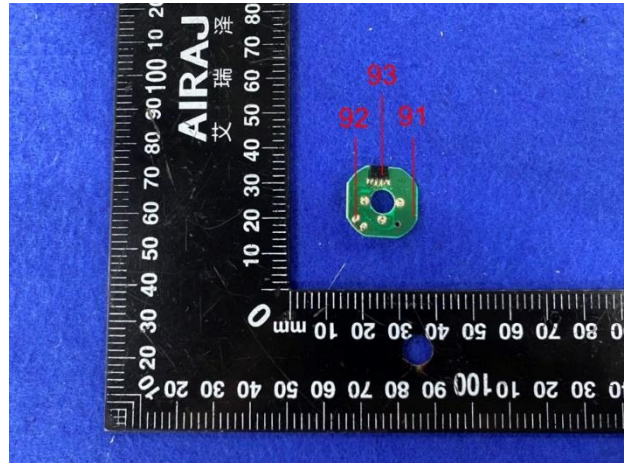


86

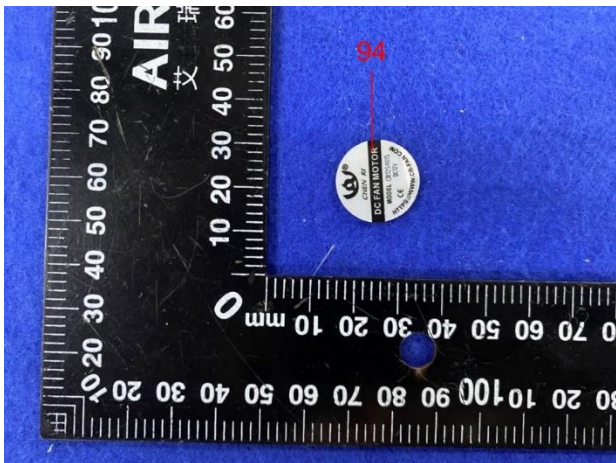
组件/部件/元器件照片



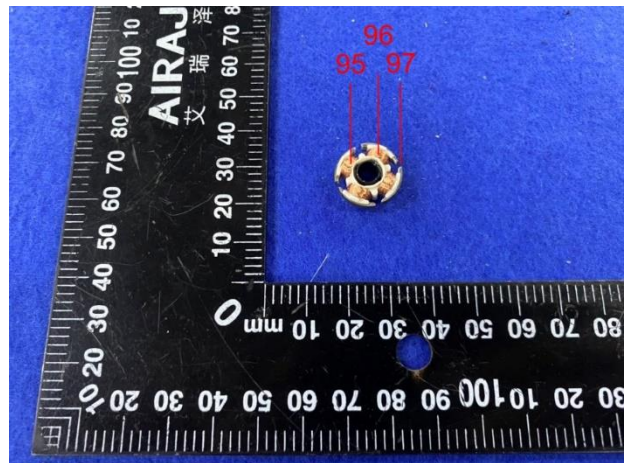
87~90



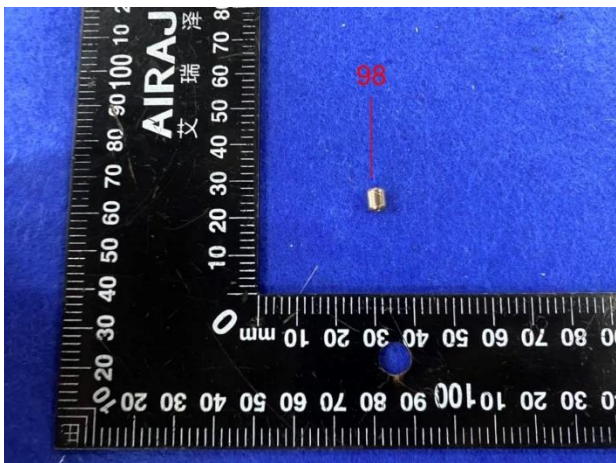
91~93



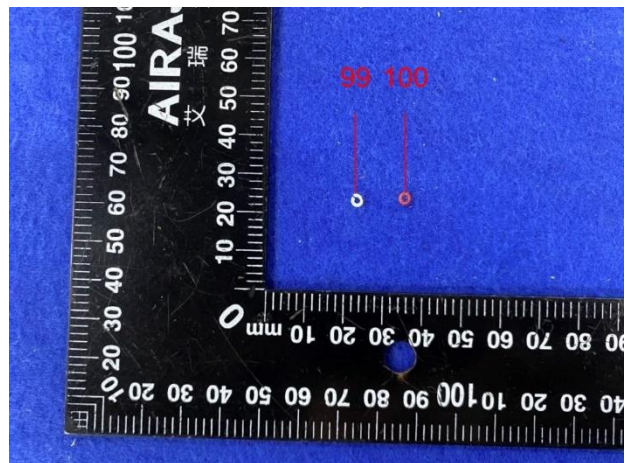
94



95~97

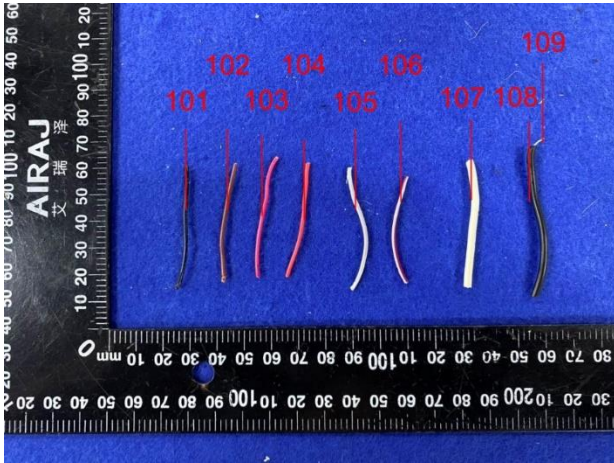


98

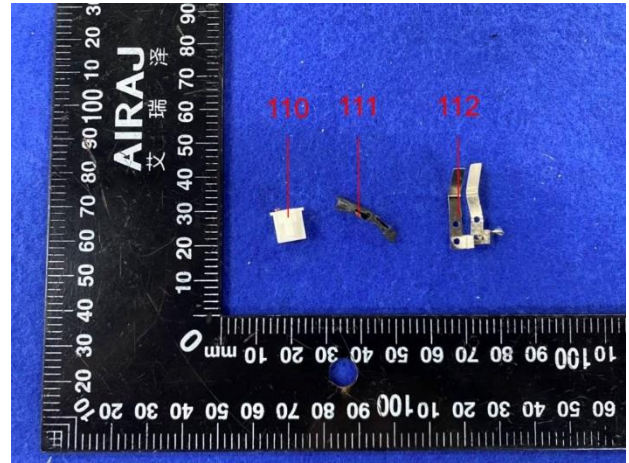


99~100

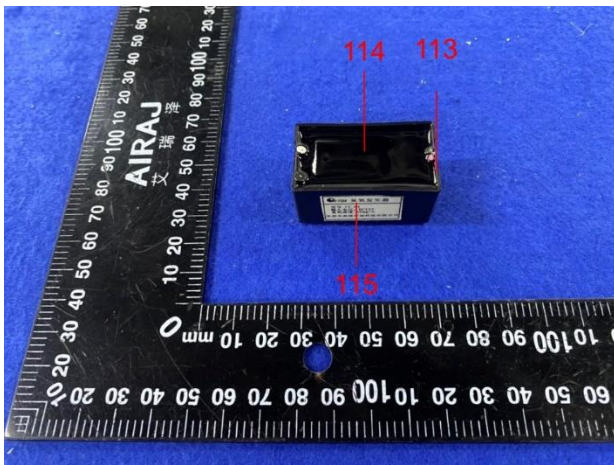
组件/部件/元器件照片



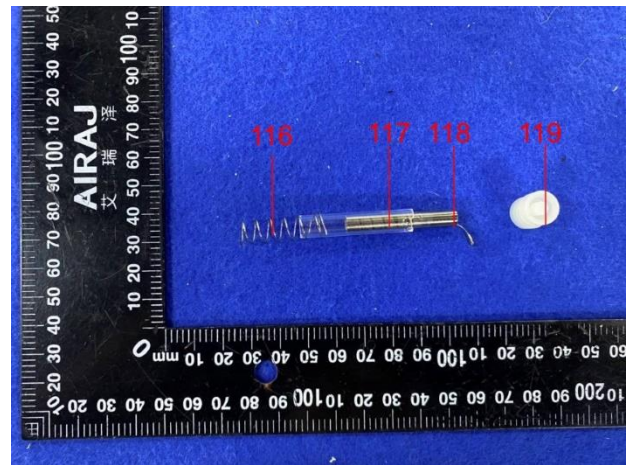
101~109



110~112



113~115



116~119

注意事项

Important

1. 报告无检测单位印章无效;

The test report is invalid without the official stamp of Lab.;

2. 未经本试验室书面同意, 不得部分地复制本报告;

Any part photocopies of the test report are forbidden without the written permission from Lab.;

3. 报告无主检、审核、批准人签名无效;

The test report is invalid without the signatures of Author and Reviewer;

4. 报告涂改无效;

The test report is invalid if altered;

5. 对检测报告若有异议, 请于收到报告之日起十五天内向检测单位提出;

Objections to the test report must be submitted to Lab. within 15 days;

6. 一般情况, 委托检测结果仅对所检测样品有效;

Generally, commission test is responsible for the tested samples only;

7. 检测结果中“—”或“N”表示“不适用”, “/”表示“未检测”, “P”表示“通过”或“合格”, “F”表示“不通过”或“不合格”。

As for the test result, “—” or “N” means “not applicable”, “/” means “not testing”, “P” means “pass” and “F” means “fail”.

***报告中未加 CMA 标志时, 检测数据和结果仅供科研、教学或内部质量控制之用。 ***

***Test data and results of the report without CMA mark will only be used for scientific research, teaching or internal quality control. ***

地址: 中国浙江省嘉兴市南湖区嘉兴总部商务花园 3 号楼

Address: Building 3, Jiaxing Advanced Business Park, Nanhu District, Jiaxing, Zhejiang, China

电话(Tel): 0573 82586881

传真(FAX): 0573 82586875

邮政编码(Post Code): 314000

E-mail: jxskb@cvc.org.cn